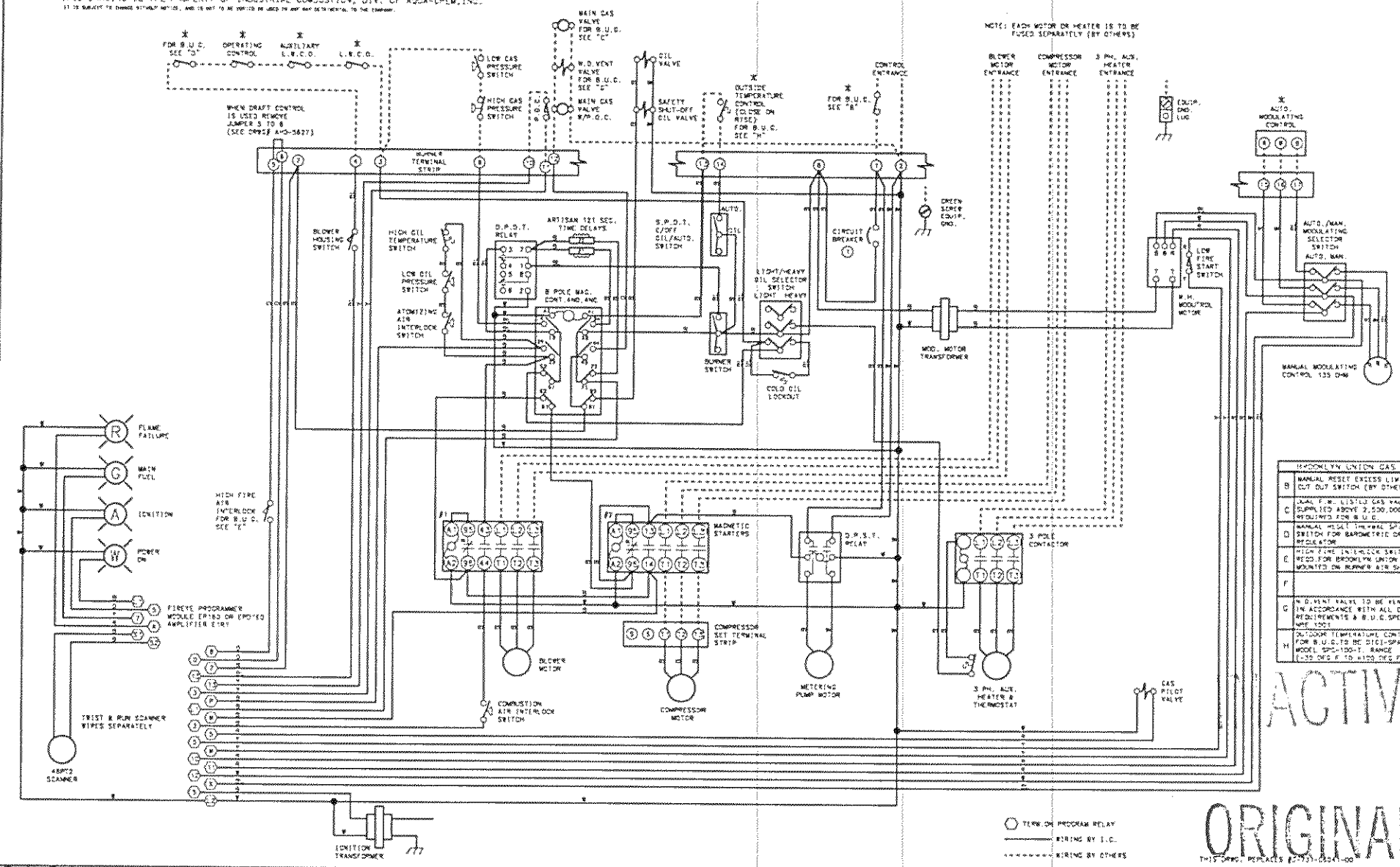


ORIGINAL

731-06041-03

THIS DRAWING IS THE PROPERTY OF INDUSTRIAL COMBUSTION, DIV. OF AQUA-CHEM, INC.
IT IS SUBJECT TO CHANGE WITHOUT NOTICE, AND IS NOT TO BE REPRODUCED OR USED IN ANY MANNER WITHOUT THE WRITTEN CONSENT OF INDUSTRIAL COMBUSTION, DIV. OF AQUA-CHEM, INC.

WARNING: THESE DRAWINGS ARE TO BE USED ONLY IN CONNECTION WITH EQUIPMENT COMPLYING IN ALL RESPECTS WITH THE ORIGINAL MANUFACTURER'S SPECIFICATIONS. INSTALLER MUST READ CAREFULLY THE ORIGINAL MANUFACTURER'S SPECIFICATIONS AND ALL REVISIONS THEREOF. ANY DEVIATION FROM THESE SPECIFICATIONS MAY CAUSE EQUIPMENT FAILURE OR DAMAGE, WHETHER DIRECT, INDIRECT, INCIDENTAL OR CONSEQUENTIAL. REPAIRS TO THIS EQUIPMENT MUST BE MADE IN ACCORDANCE WITH THE ORIGINAL MANUFACTURER'S SPECIFICATIONS. DO NOT USE THESE DRAWINGS TO MAKE MODIFICATIONS TO THE EQUIPMENT UNLESS THE MODIFICATIONS ARE SPECIFICALLY AUTHORIZED BY THE ORIGINAL MANUFACTURER. ANY MODIFICATIONS TO THE EQUIPMENT MUST BE MADE IN ACCORDANCE WITH THE ORIGINAL MANUFACTURER'S SPECIFICATIONS. DO NOT USE THESE DRAWINGS TO MAKE MODIFICATIONS TO THE EQUIPMENT UNLESS THE MODIFICATIONS ARE SPECIFICALLY AUTHORIZED BY THE ORIGINAL MANUFACTURER. ANY MODIFICATIONS TO THE EQUIPMENT MUST BE MADE IN ACCORDANCE WITH THE ORIGINAL MANUFACTURER'S SPECIFICATIONS.



NOTE: EACH MOTOR OR HEATER IS TO BE FUSED SEPARATELY (BY OTHERS)

- A BROOKLYN UNION GAS
- B MANUAL RESET EXCESS LIMIT SWITCH (BY OTHERS)
- C JAIL F.W. LISTED GAS VALVE SUPPLIED ABOVE 2,500,000 BTU/HR FOR B.U.C.
- D MANUAL HIGH LIMIT SWITCH FOR BROMOW UNION GAS REGULATOR
- E HIGH FIRE INTERLOCK SWITCH MOUNTED ON BURNER AIR SUCTER
- F
- G W.D. VENT VALVE TO BE VENTED IN ACCORDANCE WITH ALL CODE REQUIREMENTS & B.U.C. SPEC. SEE 1007
- H OUTDOOR TEMPERATURE CONTROL FOR B.U.C. TO BE DICE-SPAN MODEL SP-100-1. RANGE 133 DEG F. TO 1100 DEG F.

ACTIVE

ORIGINAL

REVISION	
DATE	
BY	
CHKD BY	
APP'D BY	
DATE	

NO.	DATE	DESCRIPTION
1		
2		
3		
4		
5		
6		
7		
8		
9		
10		
11		
12		
13		
14		
15		
16		
17		
18		
19		
20		
21		
22		
23		
24		
25		
26		
27		
28		
29		
30		
31		
32		
33		
34		
35		
36		
37		
38		
39		
40		
41		
42		
43		
44		
45		
46		
47		
48		
49		
50		

NO.	DATE	DESCRIPTION
1		
2		
3		
4		
5		
6		
7		
8		
9		
10		
11		
12		
13		
14		
15		
16		
17		
18		
19		
20		
21		
22		
23		
24		
25		
26		
27		
28		
29		
30		
31		
32		
33		
34		
35		
36		
37		
38		
39		
40		
41		
42		
43		
44		
45		
46		
47		
48		
49		
50		

NO.	DATE	DESCRIPTION
1		
2		
3		
4		
5		
6		
7		
8		
9		
10		
11		
12		
13		
14		
15		
16		
17		
18		
19		
20		
21		
22		
23		
24		
25		
26		
27		
28		
29		
30		
31		
32		
33		
34		
35		
36		
37		
38		
39		
40		
41		
42		
43		
44		
45		
46		
47		
48		
49		
50		

NO.	DATE	DESCRIPTION
1		
2		
3		
4		
5		
6		
7		
8		
9		
10		
11		
12		
13		
14		
15		
16		
17		
18		
19		
20		
21		
22		
23		
24		
25		
26		
27		
28		
29		
30		
31		
32		
33		
34		
35		
36		
37		
38		
39		
40		
41		
42		
43		
44		
45		
46		
47		
48		
49		
50		

NO.	DATE	DESCRIPTION
1		
2		
3		
4		
5		
6		
7		
8		
9		
10		
11		
12		
13		
14		
15		
16		
17		
18		
19		
20		
21		
22		
23		
24		
25		
26		
27		
28		
29		
30		
31		
32		
33		
34		
35		
36		
37		
38		
39		
40		
41		
42		
43		
44		
45		
46		
47		
48		
49		
50		

NO.	DATE	DESCRIPTION
1		
2		
3		
4		
5		
6		
7		
8		
9		
10		
11		
12		
13		
14		
15		
16		
17		
18		
19		
20		
21		
22		
23		
24		
25		
26		
27		
28		
29		
30		
31		
32		
33		
34		
35		
36		
37		
38		
39		
40		
41		
42		
43		
44		
45		
46		
47		
48		
49		
50		

NO.	DATE	DESCRIPTION
1		
2		
3		
4		
5		
6		
7		
8		
9		
10		
11		
12		
13		
14		
15		
16		
17		
18		
19		
20		
21		
22		
23		
24		
25		
26		
27		
28		
29		
30		
31		
32		
33		
34		
35		
36		
37		
38		
39		
40		
41		
42		
43		
44		
45		
46		
47		
48		
49		
50		

NO.	DATE	DESCRIPTION
1		
2		
3		
4		
5		
6		
7		
8		
9		
10		
11		
12		
13		
14		
15		
16		
17		
18		
19		
20		
21		
22		
23		
24		
25		
26		
27		
28		
29		
30		
31		
32		
33		
34		
35		
36		
37		
38		
39		
40		
41		
42		
43		
44		
45		
46		
47		
48		
49		
50		

INDUSTRIAL COMBUSTION
DIV. OF AQUA-CHEM, INC.
SIZE D1 DRWG. NO. 731 06041 103

INACTIVE
REPLACED BY 6041-04