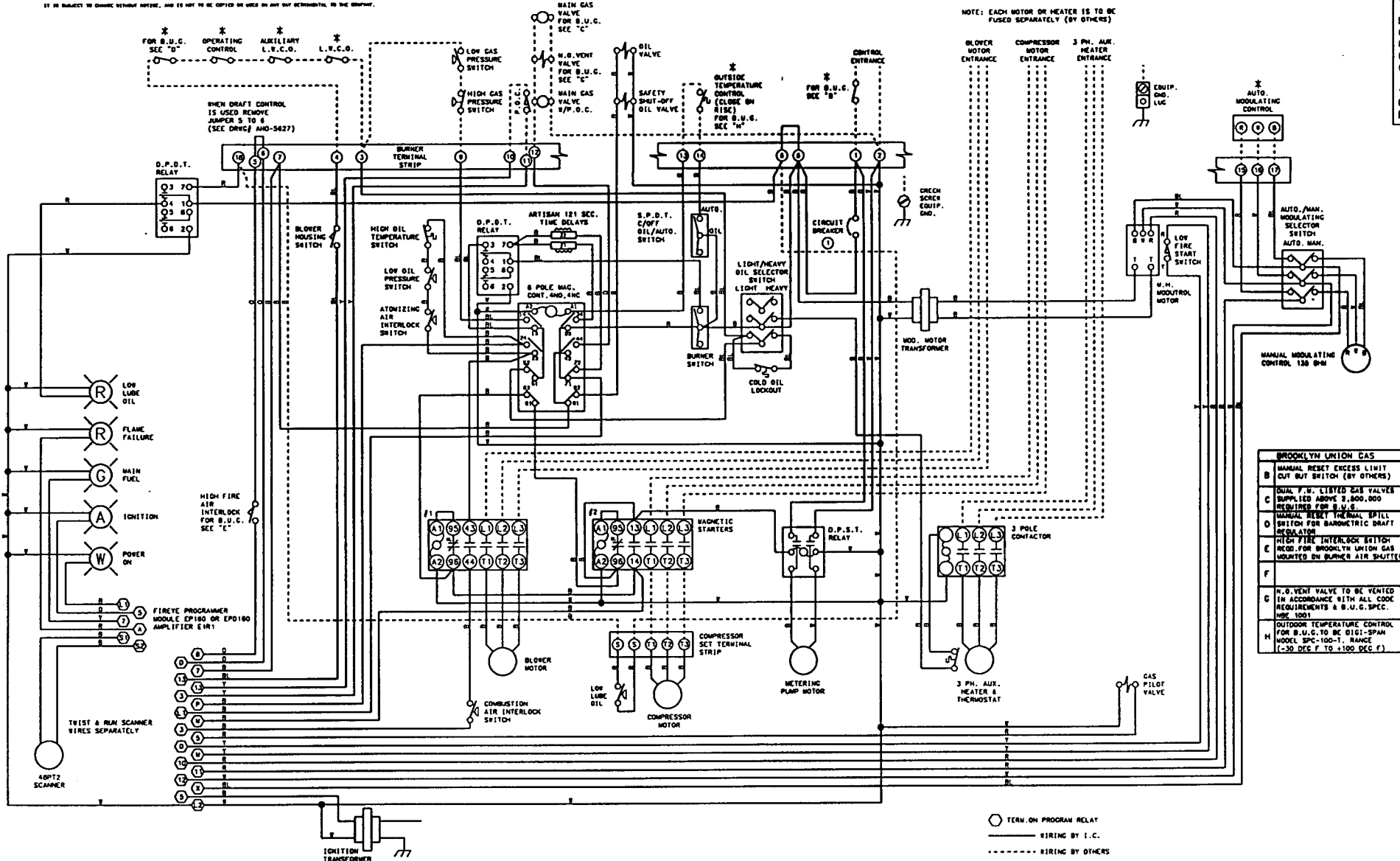


THIS DRAWING IS THE PROPERTY OF INDUSTRIAL COMBUSTION, DIV. OF AQUA-CHEM, INC.
 IT IS SUBJECT TO CHANGE WITHOUT NOTICE, AND IS NOT TO BE COPIED OR USED IN ANY WAY DETRIMENTAL TO THE COMPANY.

NOTE: EACH MOTOR OR HEATER IS TO BE FUSED SEPARATELY (BY OTHERS)



WARNING: THESE DRAWINGS ARE TO BE USED ONLY IN CONNECTION WITH EQUIPMENT COMPLYING WITH THE ORIGINAL MANUFACTURER'S SPECIFICATIONS. INSTALLERS SHOULD VERIFY EQUIPMENT AND ACCORDING COMPLIANCE WITH ORIGINAL MANUFACTURER'S SPECIFICATIONS BEFORE USING THESE DRAWINGS. DO NOT USE THESE DRAWINGS IF THE EQUIPMENT HAS BEEN MODIFIED. SUCH USE MAY CAUSE EQUIPMENT FAILURE OR MALFUNCTION WHICH MAY RESULT IN ELECTRICAL OR MECHANICAL DAMAGE TO THE EQUIPMENT OR PERSONAL INJURY. THE USER SHALL BE RESPONSIBLE FOR ANY DAMAGE TO THE EQUIPMENT OR PERSONAL INJURY. THE USER SHALL BE RESPONSIBLE FOR ANY DAMAGE TO THE EQUIPMENT OR PERSONAL INJURY. THE USER SHALL BE RESPONSIBLE FOR ANY DAMAGE TO THE EQUIPMENT OR PERSONAL INJURY.

BROOKLYN UNION GAS	
B	MANUAL RESET EXCESS LIMIT OUT BUT SWITCH (BY OTHERS)
C	QUAL F.W. LISTED GAS VALVES SUPPLIED ABOVE \$,800,000 REQUIRED FOR B.U.G.
D	MANUAL RESET THE MANUAL DRAFT SWITCH FOR BAROMETRIC DRAFT REGULATION
E	HIGH FIRE INTERLOCK SWITCH: REQD. FOR BROOKLYN UNION GAS MOUNTED ON BURNER AIR SHUTTER
F	
G	N.B. VENT VALVE TO BE VENTED IN ACCORDANCE WITH ALL CODE REQUIREMENTS & B.U.G. SPEC. MFC 1001
H	OUTDOOR TEMPERATURE CONTROL FOR B.U.G. TO BE 01G1-SPAN MODEL SPC-100-1, RANGE (-20 DEG F TO +100 DEG F)

○ TERM. ON PROGRAM RELAY
 — WIRING BY I.C.
 - - - - - WIRING BY OTHERS

WIRE COLOR	SYMBOL	WIRE ALL CIRCUITS N.E.C. CLASS 1, NOT RESPONSIBLE FOR WIRING NOT INSTALLED AT THE FACTORY.
YELLOW	Y	
ORANGE	O	
RED	R	
BLUE	B	
WHITE	W	
BLACK	B	

* OPTIONAL EQUIPMENT NOT FURNISHED UNLESS SPECIFIED IN CONTRACT.

INDUSTRIAL COMBUSTION
 DIV. OF AQUA-CHEM, INC.
 DEC-210-232,300
 LV-180-6000/1/60
 CC-120/1/60
 REV. 1.4.1
 731-08327-00