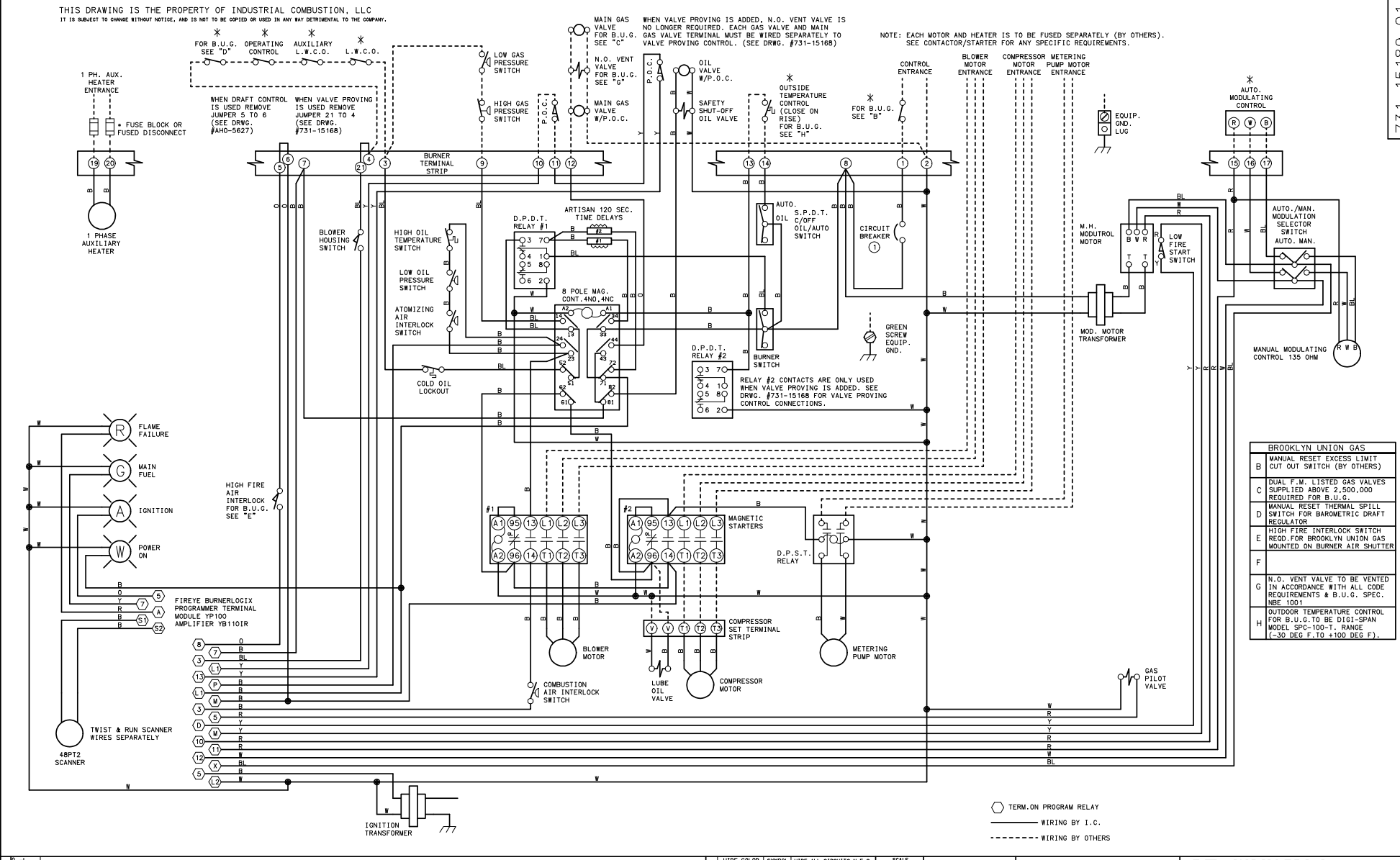


THIS DRAWING IS THE PROPERTY OF INDUSTRIAL COMBUSTION, L.L.C.
IT IS SUBJECT TO CHANGE WITHOUT NOTICE, AND IS NOT TO BE COPIED OR USED IN ANY WAY DETRIMENTAL TO THE COMPANY.

WARNING: THESE DRAWINGS ARE TO BE USED ONLY IN CONNECTION WITH EQUIPMENT COMPLYING IN ALL RESPECTS WITH THE ORIGINAL MANUFACTURER'S SPECIFICATIONS. INSTALLER SHOULD INSPECT EQUIPMENT AND ASCERTAIN COMPLIANCE WITH ORIGINAL MANUFACTURER'S SPECIFICATIONS BEFORE USING THESE DRAWINGS. DO NOT USE THESE DRAWINGS IF THE EQUIPMENT HAS BEEN MODIFIED, SUCH USE MAY CAUSE EQUIPMENT FAILURE OR MALFUNCTION WHICH MAY RESULT IN ELECTRICAL SHOCK OR BURNS OR OTHER SEVERE PERSONAL INJURY AND PROPERTY DAMAGE. INDUSTRIAL COMBUSTION DISCLAIMS ANY AND ALL LIABILITY FOR ANY INJURY OR DAMAGE, WHETHER DIRECT, INDIRECT, INCIDENTAL OR CONSEQUENTIAL, RESULTING FROM THE USE OF THESE DRAWINGS IN CONNECTION WITH EQUIPMENT WHICH DOES NOT COMPLY IN ALL RESPECTS WITH THE MANUFACTURER'S ORIGINAL SPECIFICATIONS.



BROOKLYN UNION GAS	
B	MANUAL RESET EXCESS LIMIT CUT OUT SWITCH (BY OTHERS)
C	DUAL F.M. LISTED GAS VALVES SUPPLIED ABOVE 2,500,000 REQUIRED FOR B.U.G.
D	MANUAL RESET THERMAL SPILL SWITCH FOR BAROMETRIC DRAFT REGULATOR
E	HIGH FIRE INTERLOCK SWITCH RECD. FOR BROOKLYN UNION GAS MOUNTED ON BURNER AIR SHUTTER
F	
G	N.O. VENT VALVE TO BE VENTED IN ACCORDANCE WITH ALL CODE REQUIREMENTS & B.U.G. SPEC. NBE 1001
H	OUTDOOR TEMPERATURE CONTROL FOR B.U.G. TO BE DIGI-SPAN MODEL SPC-100-T, RANGE (-30 DEG F. TO +100 DEG F.).

REVISIONS	DATE	BY	REVISION
1	12/05/07	SP	RELAY #7, COIL ON REWISD.

731 15189	WIRE COLOR	SYMBOL	WIRE ALL CIRCUITS N.E.C. CLASS 1; NOT RESPONSIBLE FOR WIRING NOT INSTALLED AT THE FACTORY.	SCALE	DATE	DRAWN
	YELLOW	Y			09/20/07	S.B.P.
	ORANGE	O				
	RED	R				
	BLUE	BL				
	WHITE	W				
	BLACK	B				

OPTIONAL EQUIPMENT NOT FURNISHED UNLESS SPECIFIED IN CONTRACT.

DEG-145, 175
LV-190-600/3/60
CC-120/1/60

IC INDUSTRIAL COMBUSTION, L.L.C.
 SIZE D DRWG. NO. 731-15189 01