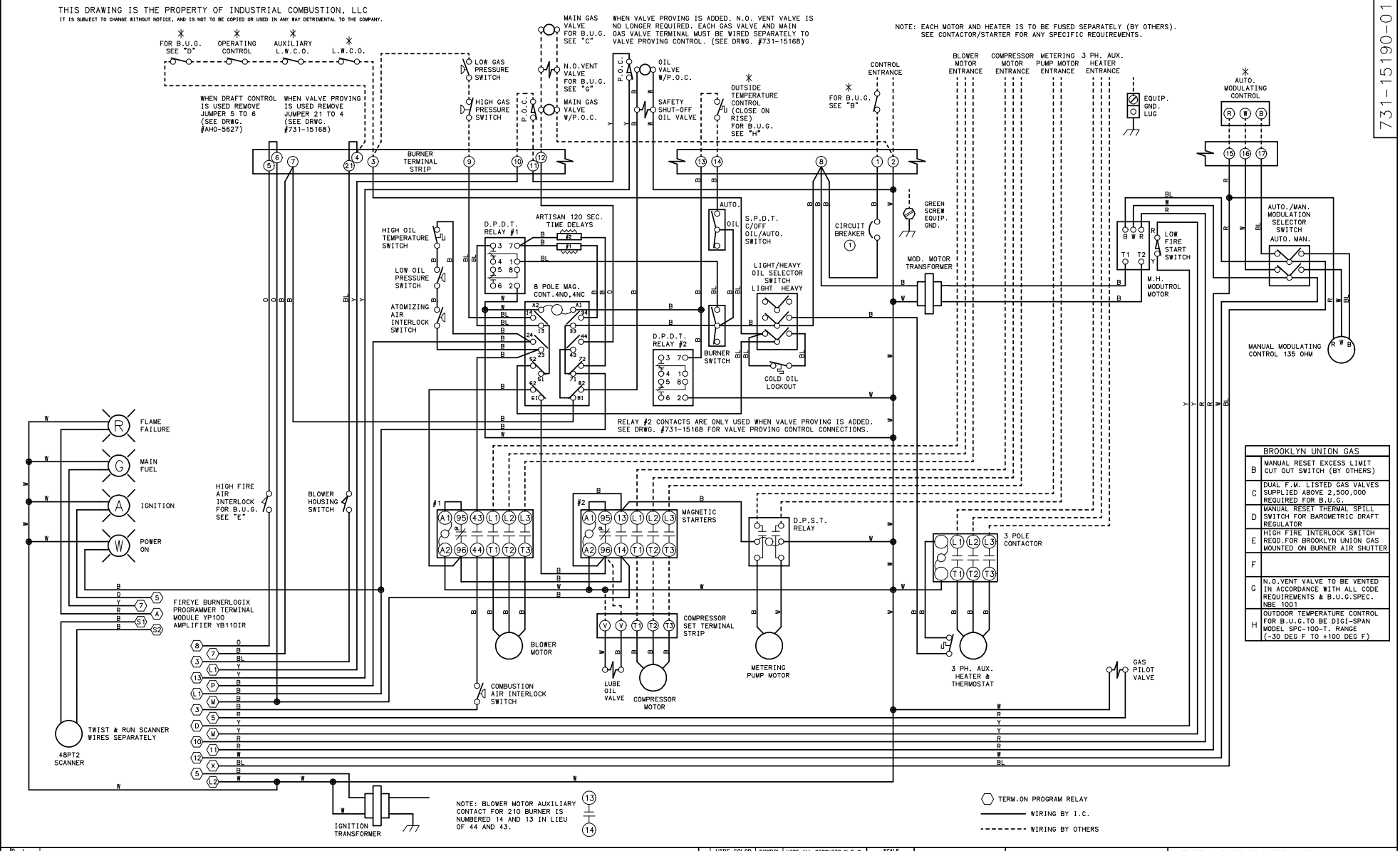


THIS DRAWING IS THE PROPERTY OF INDUSTRIAL COMBUSTION, LLC
 IT IS SUBJECT TO CHANGE WITHOUT NOTICE, AND IS NOT TO BE COPIED OR USED IN ANY WAY DETRIMENTAL TO THE COMPANY.

WARNING: THESE DRAWINGS ARE TO BE USED ONLY IN CONNECTION WITH EQUIPMENT COMPLYING IN ALL RESPECTS WITH THE ORIGINAL MANUFACTURER'S SPECIFICATIONS. INSTALLER SHOULD INSPECT EQUIPMENT AND ASCERTAIN COMPLIANCE WITH ORIGINAL MANUFACTURER'S SPECIFICATIONS BEFORE USING THESE DRAWINGS. DO NOT USE THESE DRAWINGS IF THE EQUIPMENT HAS BEEN MODIFIED, SUCH USE MAY CAUSE EQUIPMENT FAILURE OR MALFUNCTION WHICH MAY RESULT IN ELECTRICAL SHOCK OR BURNS OR OTHER SEVERE PERSONAL INJURY AND PROPERTY DAMAGE. INDUSTRIAL COMBUSTION DISCLAIMS ANY AND ALL LIABILITY FOR ANY INJURY OR DAMAGE, WHETHER DIRECT, INDIRECT, INCIDENTAL OR CONSEQUENTIAL, RESULTING FROM THE USE OF THESE DRAWINGS IN CONNECTION WITH EQUIPMENT WHICH DOES NOT COMPLY IN ALL RESPECTS WITH THE MANUFACTURER'S ORIGINAL SPECIFICATIONS.



FOR B.U.G. OPERATING CONTROL * AUXILIARY L.W.C.O. * L.W.C.O. *
 WHEN DRAFT CONTROL IS USED REMOVE JUMPER 5 TO 6 (SEE DRWG. #40-5827)
 WHEN VALVE PROVING IS USED REMOVE JUMPER 21 TO 4 (SEE DRWG. #731-15168)

MAIN GAS VALVE FOR B.U.G. SEE "C"
 N.O. VENT VALVE FOR B.U.G. SEE "G"
 OIL VALVE W/P.O.C.
 SAFETY SHUT-OFF OIL VALVE
 OUTSIDE TEMPERATURE CONTROL (CLOSE ON RISE) FOR B.U.G. SEE "H"

NOTE: EACH MOTOR AND HEATER IS TO BE FUSED SEPARATELY (BY OTHERS).
 SEE CONTACTOR/STARTER FOR ANY SPECIFIC REQUIREMENTS.

RELAY #2 CONTACTS ARE ONLY USED WHEN VALVE PROVING IS ADDED.
 SEE DRWG. #731-15168 FOR VALVE PROVING CONTROL CONNECTIONS.

BROOKLYN UNION GAS	
B	MANUAL RESET EXCESS LIMIT CUT OUT SWITCH (BY OTHERS)
C	DUAL F.W. LISTED GAS VALVES SUPPLIED ABOVE 2,500,000 REQUIRED FOR B.U.G.
D	MANUAL RESET THERMAL SPILL SWITCH FOR BAROMETRIC DRAFT REGULATOR
E	HIGH FIRE INTERLOCK SWITCH REQD. FOR BROOKLYN UNION GAS MOUNTED ON BURNER AIR SHUTTER
F	N.O. VENT VALVE TO BE VENTED IN ACCORDANCE WITH ALL CODE REQUIREMENTS & B.U.G. SPEC. NBE 1001
G	MANUAL RESET THERMAL SPILL SWITCH FOR BAROMETRIC DRAFT REGULATOR
H	OUTDOOR TEMPERATURE CONTROL FOR B.U.G. TO BE D161-SPAN MODEL SPC-100-T. RANGE (-30 DEG F TO +100 DEG F)

NOTE: BLOWER MOTOR AUXILIARY CONTACT FOR 210 BURNER IS NUMBERED 14 AND 13 IN LIEU OF 44 AND 45.

○ TERM. ON PROGRAM RELAY
 — WIRING BY I.C.
 - - - - - WIRING BY OTHERS

REVISIONS	DATE	BY	REASON
1	12/09/07	TP	RELAY #7, OIL VALVE, MODIFIED

WIRE COLOR	SYMBOL	WIRE ALL CIRCUITS N.E.C. CLASS 1; NOT RESPONSIBLE FOR WIRING NOT INSTALLED AT THE FACTORY.	DATE
YELLOW	Y		09/20/07
ORANGE	O		
RED	R		
BLUE	BL	① SUPPLEMENTARY LOW OVERCURRENT PROTECTION ONLY - FUSE NOT LARGER THAN 15 AMPS.	
WHITE	W		
BLACK	B		

SCALE	OPTIONAL EQUIPMENT NOT FURNISHED UNLESS SPECIFIED IN CONTRACT.
1" = 1'-0"	

DEG-210, 252, 300	
LV-208/3/60	
CC-120/1/60	

