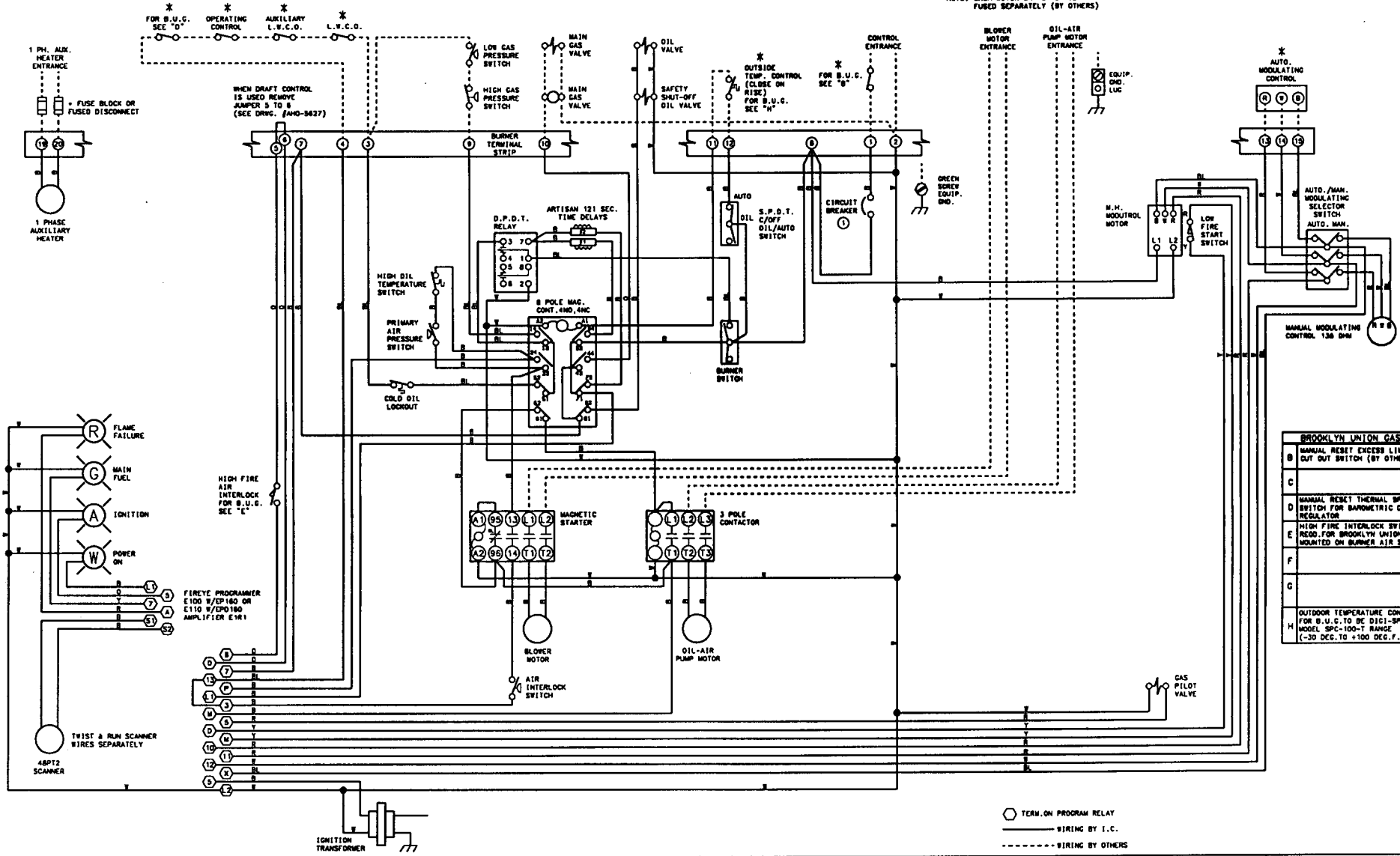


THIS DRAWING IS THE PROPERTY OF INDUSTRIAL COMBUSTION, DIV. OF AQUA-CHEM, INC.  
 IT IS SUBJECT TO CHANGE WITHOUT NOTICE, AND IS NOT TO BE COPIED OR USED IN ANY WAY DETRIMENTAL TO THE COMPANY.

NOTE: EACH MOTOR OR HEATER IS TO BE FUSED SEPARATELY (BY OTHERS)



BROOKLYN UNION GAS	
B	MANUAL RESET EXCESS LIMIT CUT OUT SWITCH (BY OTHERS)
C	
D	MANUAL RESET THERMAL SPILL SWITCH FOR BAROMETRIC DRAFT REGULATOR
E	HIGH FIRE INTERLOCK SWITCH REQD. FOR BROOKLYN UNION GAS MOUNTED ON BURNER AIR SHUTTER
F	
G	
H	OUTDOOR TEMPERATURE CONTROL FOR B.U.G. TO BE DICI-SPAN MODEL SPC-100-T RANGE (-30 DEG. TO +100 DEG. F.)

○ TERM. ON PROGRAM RELAY  
 — WIRING BY I.C.  
 - - - WIRING BY OTHERS

WIRE COLOR	SYMBOL	WIRE ALL CIRCUITS W. I.C.
YELLOW	Y	CLASS 1 NOT RESPONSIBLE FOR WIRING NOT INSTALLED AT THE FACILITY
ORANGE	O	
RED	R	
BLUE	BL	SUPPLEMENTARY LOW VOLTAGE PROTECTION ONLY - FUSE NOT LARGER THAN 15 AMPS.
WHITE	W	
BLACK	B	

\* OPTIONAL EQUIPMENT NOT FURNISHED UNLESS SPECIFIED IN CONTRACT.

INDUSTRIAL COMBUSTION  
 DIV. OF AQUA-CHEM, INC.  
 11/23/78  
 REV. 1.1 (1)  
 P.P.C.

WIC-28-30-34-42  
 LV-120-240/1/80  
 CC-120/1/80

731-05840-02

WARNING: THESE DRAWINGS ARE TO BE USED ONLY IN CONNECTION WITH EQUIPMENT COMPLYING WITH THE ORIGINAL MANUFACTURER'S SPECIFICATIONS. INSTALLER SHOULD VERIFY EQUIPMENT AND ASSEMBLY COMPLIANCE WITH ORIGINAL MANUFACTURER'S SPECIFICATIONS BEFORE USING THESE DRAWINGS. IF THE EQUIPMENT HAS BEEN MODIFIED, SUCH USE MAY CAUSE EQUIPMENT FAILURE OR MALFUNCTION WHICH MAY RESULT IN ELECTRICAL SHOCK, FIRE, OR OTHER HAZARDOUS CONDITIONS. THE USER ASSUMES ALL LIABILITY FOR ANY DAMAGE, WHETHER DIRECT, INDIRECT, INCIDENTAL OR CONSEQUENTIAL, RESULTING FROM USE OF THESE DRAWINGS IN CONNECTION WITH EQUIPMENT WHICH DOES NOT COMPLY WITH THE MANUFACTURER'S ORIGINAL SPECIFICATIONS.

REVISIONS  
 11/23/78  
 12/1/78  
 1/1/79  
 2/1/79  
 3/1/79  
 4/1/79  
 5/1/79  
 6/1/79  
 7/1/79  
 8/1/79  
 9/1/79  
 10/1/79  
 11/1/79  
 12/1/79  
 1/1/80  
 2/1/80  
 3/1/80  
 4/1/80  
 5/1/80  
 6/1/80  
 7/1/80  
 8/1/80  
 9/1/80  
 10/1/80  
 11/1/80  
 12/1/80  
 1/1/81  
 2/1/81  
 3/1/81  
 4/1/81  
 5/1/81  
 6/1/81  
 7/1/81  
 8/1/81  
 9/1/81  
 10/1/81  
 11/1/81  
 12/1/81  
 1/1/82  
 2/1/82  
 3/1/82  
 4/1/82  
 5/1/82  
 6/1/82  
 7/1/82  
 8/1/82  
 9/1/82  
 10/1/82  
 11/1/82  
 12/1/82  
 1/1/83  
 2/1/83  
 3/1/83  
 4/1/83  
 5/1/83  
 6/1/83  
 7/1/83  
 8/1/83  
 9/1/83  
 10/1/83  
 11/1/83  
 12/1/83  
 1/1/84  
 2/1/84  
 3/1/84  
 4/1/84  
 5/1/84  
 6/1/84  
 7/1/84  
 8/1/84  
 9/1/84  
 10/1/84  
 11/1/84  
 12/1/84  
 1/1/85  
 2/1/85  
 3/1/85  
 4/1/85  
 5/1/85  
 6/1/85  
 7/1/85  
 8/1/85  
 9/1/85  
 10/1/85  
 11/1/85  
 12/1/85  
 1/1/86  
 2/1/86  
 3/1/86  
 4/1/86  
 5/1/86  
 6/1/86  
 7/1/86  
 8/1/86  
 9/1/86  
 10/1/86  
 11/1/86  
 12/1/86  
 1/1/87  
 2/1/87  
 3/1/87  
 4/1/87  
 5/1/87  
 6/1/87  
 7/1/87  
 8/1/87  
 9/1/87  
 10/1/87  
 11/1/87  
 12/1/87  
 1/1/88  
 2/1/88  
 3/1/88  
 4/1/88  
 5/1/88  
 6/1/88  
 7/1/88  
 8/1/88  
 9/1/88  
 10/1/88  
 11/1/88  
 12/1/88  
 1/1/89  
 2/1/89  
 3/1/89  
 4/1/89  
 5/1/89  
 6/1/89  
 7/1/89  
 8/1/89  
 9/1/89  
 10/1/89  
 11/1/89  
 12/1/89  
 1/1/90  
 2/1/90  
 3/1/90  
 4/1/90  
 5/1/90  
 6/1/90  
 7/1/90  
 8/1/90  
 9/1/90  
 10/1/90  
 11/1/90  
 12/1/90  
 1/1/91  
 2/1/91  
 3/1/91  
 4/1/91  
 5/1/91  
 6/1/91  
 7/1/91  
 8/1/91  
 9/1/91  
 10/1/91  
 11/1/91  
 12/1/91  
 1/1/92  
 2/1/92  
 3/1/92  
 4/1/92  
 5/1/92  
 6/1/92  
 7/1/92  
 8/1/92  
 9/1/92  
 10/1/92  
 11/1/92  
 12/1/92  
 1/1/93  
 2/1/93  
 3/1/93  
 4/1/93  
 5/1/93  
 6/1/93  
 7/1/93  
 8/1/93  
 9/1/93  
 10/1/93  
 11/1/93  
 12/1/93  
 1/1/94  
 2/1/94  
 3/1/94  
 4/1/94  
 5/1/94  
 6/1/94  
 7/1/94  
 8/1/94  
 9/1/94  
 10/1/94  
 11/1/94  
 12/1/94  
 1/1/95  
 2/1/95  
 3/1/95  
 4/1/95  
 5/1/95  
 6/1/95  
 7/1/95  
 8/1/95  
 9/1/95  
 10/1/95  
 11/1/95  
 12/1/95  
 1/1/96  
 2/1/96  
 3/1/96  
 4/1/96  
 5/1/96  
 6/1/96  
 7/1/96  
 8/1/96  
 9/1/96  
 10/1/96  
 11/1/96  
 12/1/96  
 1/1/97  
 2/1/97  
 3/1/97  
 4/1/97  
 5/1/97  
 6/1/97  
 7/1/97  
 8/1/97  
 9/1/97  
 10/1/97  
 11/1/97  
 12/1/97  
 1/1/98  
 2/1/98  
 3/1/98  
 4/1/98  
 5/1/98  
 6/1/98  
 7/1/98  
 8/1/98  
 9/1/98  
 10/1/98  
 11/1/98  
 12/1/98  
 1/1/99  
 2/1/99  
 3/1/99  
 4/1/99  
 5/1/99  
 6/1/99  
 7/1/99  
 8/1/99  
 9/1/99  
 10/1/99  
 11/1/99  
 12/1/99  
 1/2000  
 2/2000  
 3/2000  
 4/2000  
 5/2000  
 6/2000  
 7/2000  
 8/2000  
 9/2000  
 10/2000  
 11/2000  
 12/2000