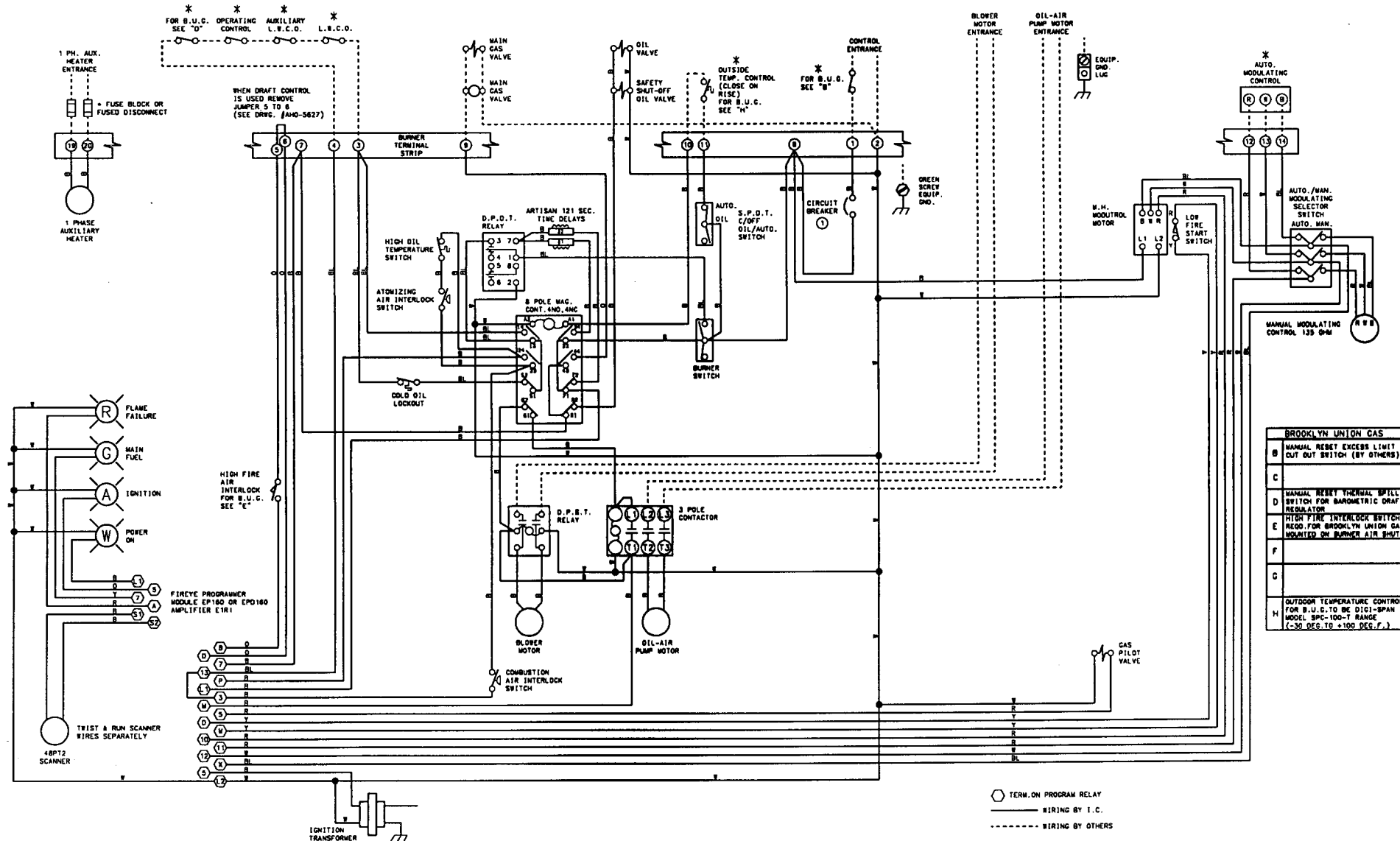


THIS DRAWING IS THE PROPERTY OF INDUSTRIAL COMBUSTION, DIV. OF AQUA-CHEM, INC.  
 IT IS SUBJECT TO CHANGE WITHOUT NOTICE, AND IS NOT TO BE COPIED OR USED IN ANY WAY DETRIMENTAL TO THE COMPANY.

NOTE: EACH MOTOR OR HEATER IS TO BE FUSED SEPARATELY (BY OTHERS)



BROOKLYN UNION GAS	
B	MANUAL RESET EXCESS LIMIT OUT GUT SWITCH (BY OTHERS)
C	
D	MANUAL RESET THERMAL SPILL SWITCH FOR BAROMETRIC DRAFT REGULATOR
E	HIGH FIRE INTERLOCK SWITCH NEED FOR BROOKLYN UNION GAS MOUNTED ON BURNER AIR SHUTTER
F	
G	
H	OUTDOOR TEMPERATURE CONTROL FOR B.U.C. TO BE D111-SPAN MODEL SPC-100-T RANGE (-30 DEG. TO +100 DEG. F.)

○ TERM. ON PROGRAM RELAY  
 — WIRING BY I.C.  
 - - - - - WIRING BY OTHERS

WIRE COLOR	SYMBOL	WIRE ALL CIRCUITS N.E.C. CLASS 1, NOT RESPONSIBLE FOR WIRING NOT INSTALLED AT THE FACTORY	OPTIONAL EQUIPMENT NOT FURNISHED UNLESS SPECIFIED IN CONTRACT.	INDUSTRIAL COMBUSTION DIV. OF AQUA-CHEM, INC.
YELLOW	Y			REC. MNC-14, 18, 19, 22
ORANGE	O			LV-120-240/1/80
RED	R			REV. 12/09/83
BLUE	BL			REV. J.S.C. 12/09/83
WHITE	W			REV. J.S.C. 12/09/83
BLACK	B			REV. J.S.C. 12/09/83

WARNING: THESE DRAWINGS ARE TO BE USED ONLY IN CONNECTION WITH EQUIPMENT COMPLYING WITH THE ORIGINAL MANUFACTURER'S SPECIFICATIONS. INSTALLER SHOULD INSPECT EQUIPMENT AND ASCERTAIN COMPLIANCE WITH THESE DRAWINGS BEFORE USING. THESE DRAWINGS DO NOT USE THESE DRAWINGS IF THE EQUIPMENT HAS BEEN MODIFIED. SUCH USE MAY CAUSE EQUIPMENT DAMAGE OR MALFUNCTION WHICH MAY RESULT IN ELECTRICAL SHOCK OR BURNS OR OTHER SERIOUS PERSONAL INJURY. ALWAYS CHECK FOR CORRECTIONS TO THESE DRAWINGS IN CONNECTION WITH EQUIPMENT WHICH DOES NOT COMPLY IN ALL RESPECTS WITH THE MANUFACTURER'S ORIGINAL SPECIFICATIONS. FROM USE OF THESE DRAWINGS IN CONNECTION WITH EQUIPMENT WHICH DOES NOT COMPLY IN ALL RESPECTS WITH THE MANUFACTURER'S ORIGINAL SPECIFICATIONS.

REVISIONS	DATE	BY	DESCRIPTION
1	12/17/79	RF	REVISED FOR 1/80
2	12/17/79	RF	REVISED FOR 1/80
3	12/17/79	RF	REVISED FOR 1/80
4	12/17/79	RF	REVISED FOR 1/80
5	12/17/79	RF	REVISED FOR 1/80
6	12/17/79	RF	REVISED FOR 1/80
7	12/17/79	RF	REVISED FOR 1/80
8	12/17/79	RF	REVISED FOR 1/80
9	12/17/79	RF	REVISED FOR 1/80
10	12/17/79	RF	REVISED FOR 1/80