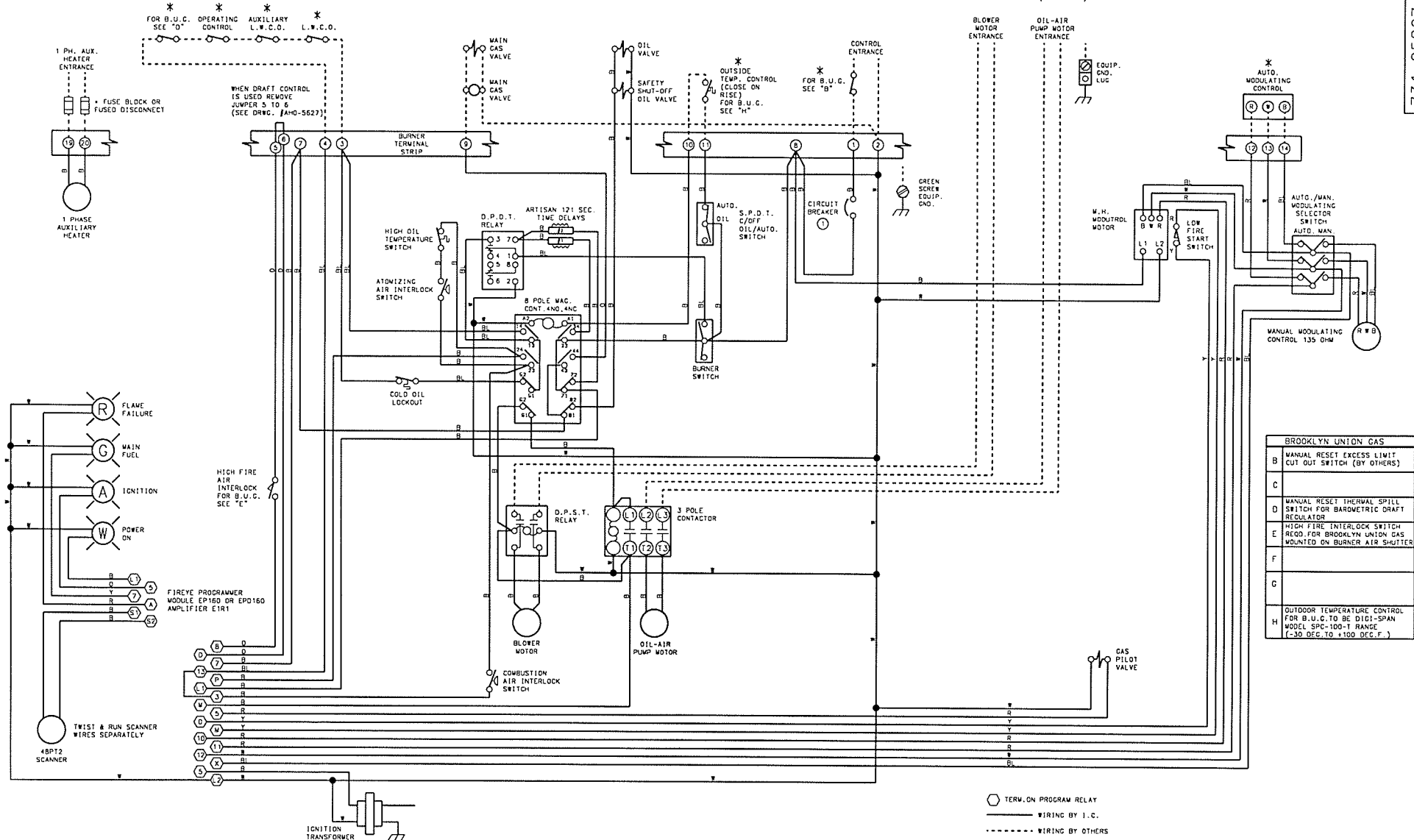


THIS DRAWING IS THE PROPERTY OF INDUSTRIAL COMBUSTION, DIV. OF AQUA-CHEM, INC.
IT IS SUBJECT TO CHANGE WITHOUT NOTICE, AND IS NOT TO BE COPIED OR USED IN ANY WAY DETRIMENTAL TO THE COMPANY.

NOTE: EACH MOTOR OR HEATER IS TO BE FUSED SEPARATELY (BY OTHERS)



BROOKLYN UNION GAS	
B	MANUAL RESET EXCESS LIMIT CUT OUT SWITCH (BY OTHERS)
C	
D	MANUAL RESET THERMAL SPILL SWITCH FOR BAROMETRIC DRAFT REGULATOR
E	HIGH FIRE INTERLOCK SWITCH REQ. FOR BROOKLYN UNION GAS MOUNTED ON BURNER AIR SHUTTER
F	
G	
H	OUTDOOR TEMPERATURE CONTROL FOR B.U.C. TO BE DICI-SPAN MODEL SPC-100-T RANGE (-30 DEG. TO +100 DEG. F.)

WARNING: THESE DRAWINGS ARE TO BE USED ONLY IN CONNECTION WITH EQUIPMENT COMPLYING IN ALL RESPECTS WITH THE ORIGINAL MANUFACTURER'S SPECIFICATIONS. INSTALLERS SHOULD INSPECT EQUIPMENT AND ASCERTAIN COMPLIANCE WITH ORIGINAL MANUFACTURER'S SPECIFICATIONS BEFORE USING THESE DRAWINGS. DO NOT USE THESE DRAWINGS IF THE EQUIPMENT HAS BEEN MODIFIED, SUCH USE MAY CAUSE EQUIPMENT FAILURE OR MALFUNCTION WHICH MAY RESULT IN ELECTRICAL FIRE OR EXPLOSION. THESE DRAWINGS ARE NOT TO BE COPIED OR USED IN ANY WAY DETRIMENTAL TO THE COMPANY. FROM USE OF THESE DRAWINGS IN CONNECTION WITH EQUIPMENT WHICH DOES NOT COMPLY IN ALL RESPECTS WITH THE MANUFACTURER'S ORIGINAL SPECIFICATIONS.

REVISIONS	DATE	DESCRIPTION
1	11/15/93	NEW U.I. FOR
2	11/17/93	NEW U.I. FOR
3	11/17/93	NEW U.I. FOR
4	11/17/93	NEW U.I. FOR
5	11/17/93	NEW U.I. FOR
6	11/17/93	NEW U.I. FOR
7	11/17/93	NEW U.I. FOR
8	11/17/93	NEW U.I. FOR
9	11/17/93	NEW U.I. FOR
10	11/17/93	NEW U.I. FOR
11	11/17/93	NEW U.I. FOR
12	11/17/93	NEW U.I. FOR
13	11/17/93	NEW U.I. FOR
14	11/17/93	NEW U.I. FOR
15	11/17/93	NEW U.I. FOR
16	11/17/93	NEW U.I. FOR
17	11/17/93	NEW U.I. FOR
18	11/17/93	NEW U.I. FOR
19	11/17/93	NEW U.I. FOR
20	11/17/93	NEW U.I. FOR
21	11/17/93	NEW U.I. FOR
22	11/17/93	NEW U.I. FOR
23	11/17/93	NEW U.I. FOR
24	11/17/93	NEW U.I. FOR
25	11/17/93	NEW U.I. FOR
26	11/17/93	NEW U.I. FOR
27	11/17/93	NEW U.I. FOR
28	11/17/93	NEW U.I. FOR
29	11/17/93	NEW U.I. FOR
30	11/17/93	NEW U.I. FOR
31	11/17/93	NEW U.I. FOR
32	11/17/93	NEW U.I. FOR
33	11/17/93	NEW U.I. FOR
34	11/17/93	NEW U.I. FOR
35	11/17/93	NEW U.I. FOR
36	11/17/93	NEW U.I. FOR
37	11/17/93	NEW U.I. FOR
38	11/17/93	NEW U.I. FOR
39	11/17/93	NEW U.I. FOR
40	11/17/93	NEW U.I. FOR
41	11/17/93	NEW U.I. FOR
42	11/17/93	NEW U.I. FOR
43	11/17/93	NEW U.I. FOR
44	11/17/93	NEW U.I. FOR
45	11/17/93	NEW U.I. FOR
46	11/17/93	NEW U.I. FOR
47	11/17/93	NEW U.I. FOR
48	11/17/93	NEW U.I. FOR
49	11/17/93	NEW U.I. FOR
50	11/17/93	NEW U.I. FOR

WIRE COLOR	SYMBOL	WIRE ALL CIRCUITS W.E.C. CLASS 1, NOT RESPONSIBLE FOR WIRING NOT INSTALLED AT THE FACTORY
YELLOW	Y	
ORANGE	O	
RED	R	
BLUE	B	
WHITE	W	
BLACK	B	

SCALE	DATE	OPTIONAL EQUIPMENT
MMG-14, 16, 19, 22	12/09/93	NOT FURNISHED UNLESS SPECIFIED IN CONTRACT
LV-120-240/1/60		
CC-120/1/60		

IC INDUSTRIAL COMBUSTION
MONROE, WIS. DIVISION OF AQUA-CHEM, INC.

SIZE **D** DRWG. NO. 731 05897 06