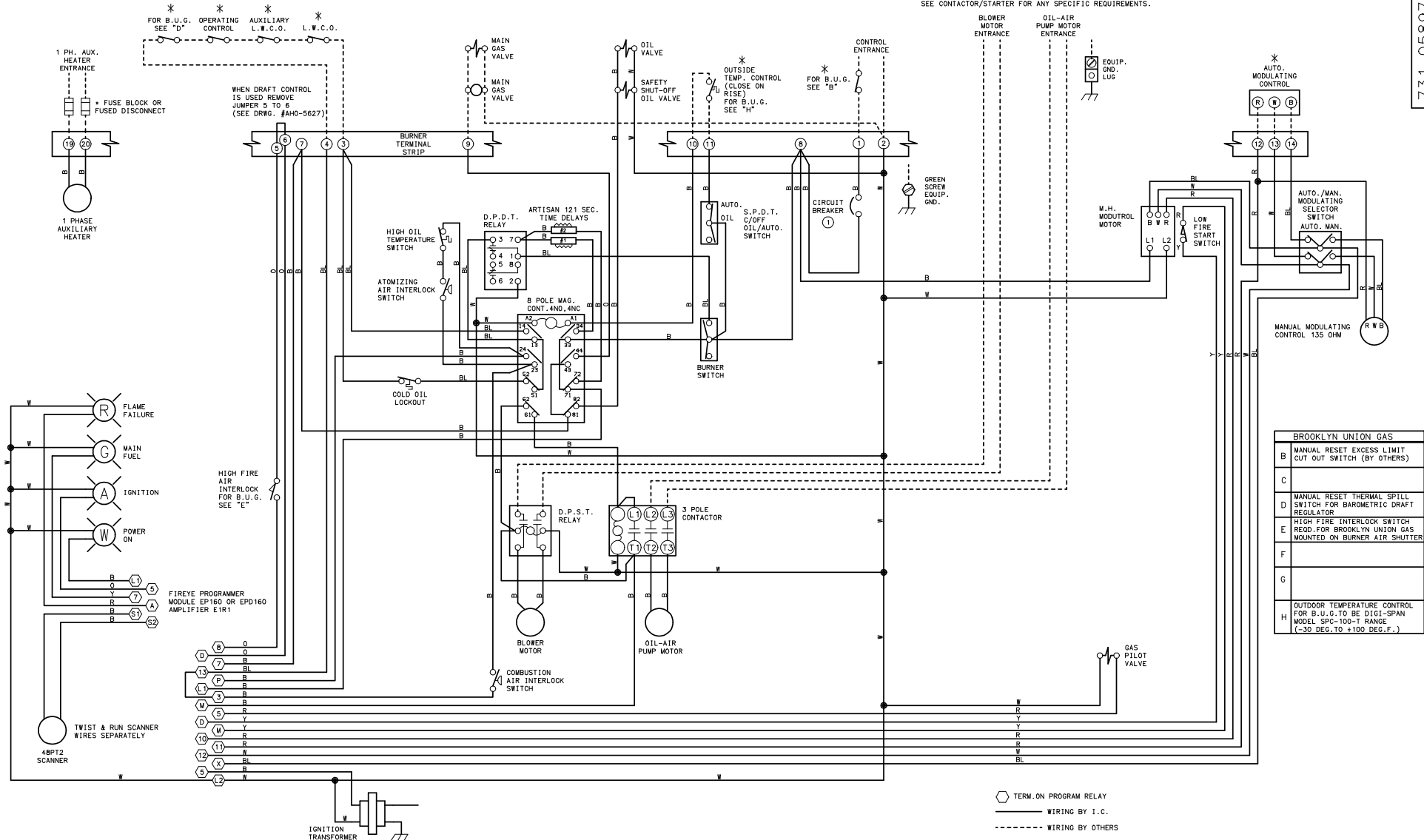


THIS DRAWING IS THE PROPERTY OF INDUSTRIAL COMBUSTION.
IT IS SUBJECT TO CHANGE WITHOUT NOTICE, AND IS NOT TO BE COPIED OR USED IN ANY WAY DETRIMENTAL TO THE COMPANY.

NOTE: EACH MOTOR AND HEATER IS TO BE FUSED SEPARATELY (BY OTHERS).
SEE CONTACTOR/STARTER FOR ANY SPECIFIC REQUIREMENTS.



WARNING: THESE DRAWINGS ARE TO BE USED ONLY IN CONNECTION WITH EQUIPMENT COMPLYING IN ALL RESPECTS WITH THE ORIGINAL MANUFACTURER'S SPECIFICATIONS. INSTALLER SHOULD INSPECT EQUIPMENT AND ASCERTAIN COMPLIANCE WITH ORIGINAL MANUFACTURER'S SPECIFICATIONS BEFORE USING THESE DRAWINGS. DO NOT USE THESE DRAWINGS IF THE EQUIPMENT HAS BEEN MODIFIED, SUCH USE MAY CAUSE EQUIPMENT FAILURE OR MALFUNCTION WHICH MAY RESULT IN ELECTRICAL SHOCK OR BURNS OR OTHER SEVERE PERSONAL INJURY AND PROPERTY DAMAGE. INDUSTRIAL COMBUSTION DISCLAIMS ANY AND ALL LIABILITY FOR ANY INJURY OR DAMAGE, WHETHER DIRECT, INDIRECT, INCIDENTAL OR CONSEQUENTIAL, RESULTING FROM USE OF THESE DRAWINGS IN CONNECTION WITH EQUIPMENT WHICH DOES NOT COMPLY IN ALL RESPECTS WITH THE MANUFACTURER'S ORIGINAL SPECIFICATIONS.

| REVISIONS | DATE | BY | DESCRIPTION |
|-----------|----------|----|---------------|
| 1 | 11/25/94 | VE | REVISED FOR |
| 2 | 11/21/95 | VE | NOTES WAS |
| 3 | 02/29/98 | VE | MODELS 16 AND |
| 4 | 02/19/98 | DD | MODELS 16 AND |
| 5 | 07/16/99 | DP | MODELS 16 AND |
| 6 | 12/10/01 | TP | MODELS 16 AND |
| 7 | 09/27/08 | DP | MODELS 16 AND |
| 8 | 09/27/08 | DP | MODELS 16 AND |
| 9 | 09/27/08 | DP | MODELS 16 AND |

| WIRE COLOR | SYMBOL | WIRE ALL CIRCUITS N.E.C. CLASS 1: NOT RESPONSIBLE FOR WIRING NOT INSTALLED AT THE FACTORY. | DATE | SCALE |
|------------|--------|--|----------|-------|
| YELLOW | Y | | 12/09/93 | 3/8" |
| ORANGE | O | | | |
| RED | R | | | |
| BLUE | BL | | | |
| WHITE | W | | | |
| BLACK | B | | | |

| WIRE COLOR | SYMBOL | WIRE ALL CIRCUITS N.E.C. CLASS 1: NOT RESPONSIBLE FOR WIRING NOT INSTALLED AT THE FACTORY. | DATE | SCALE |
|------------|--------|--|----------|-------|
| YELLOW | Y | | 12/09/93 | 3/8" |
| ORANGE | O | | | |
| RED | R | | | |
| BLUE | BL | | | |
| WHITE | W | | | |
| BLACK | B | | | |

| WIRE COLOR | SYMBOL | WIRE ALL CIRCUITS N.E.C. CLASS 1: NOT RESPONSIBLE FOR WIRING NOT INSTALLED AT THE FACTORY. | DATE | SCALE |
|------------|--------|--|----------|-------|
| YELLOW | Y | | 12/09/93 | 3/8" |
| ORANGE | O | | | |
| RED | R | | | |
| BLUE | BL | | | |
| WHITE | W | | | |
| BLACK | B | | | |

| WIRE COLOR | SYMBOL | WIRE ALL CIRCUITS N.E.C. CLASS 1: NOT RESPONSIBLE FOR WIRING NOT INSTALLED AT THE FACTORY. | DATE | SCALE |
|------------|--------|--|----------|-------|
| YELLOW | Y | | 12/09/93 | 3/8" |
| ORANGE | O | | | |
| RED | R | | | |
| BLUE | BL | | | |
| WHITE | W | | | |
| BLACK | B | | | |

| BROOKLYN UNION GAS | |
|--------------------|---|
| B | MANUAL RESET EXCESS LIMIT CUT OUT SWITCH (BY OTHERS) |
| C | |
| D | MANUAL RESET THERMAL SPILL SWITCH FOR BAROMETRIC DRAFT REGULATOR |
| E | HIGH FIRE INTERLOCK SWITCH RECD. FOR BROOKLYN UNION GAS MOUNTED ON BURNER AIR SHUTTER |
| F | |
| G | |
| H | OUTDOOR TEMPERATURE CONTROL FOR B.U.G. TO BE DIGI-SPAN MODEL SPC-100-T RANGE (-30 DEG. TO +100 DEG. F.) |

○ TERM. ON PROGRAM RELAY
 — WIRING BY I.C.
 - - - - - WIRING BY OTHERS