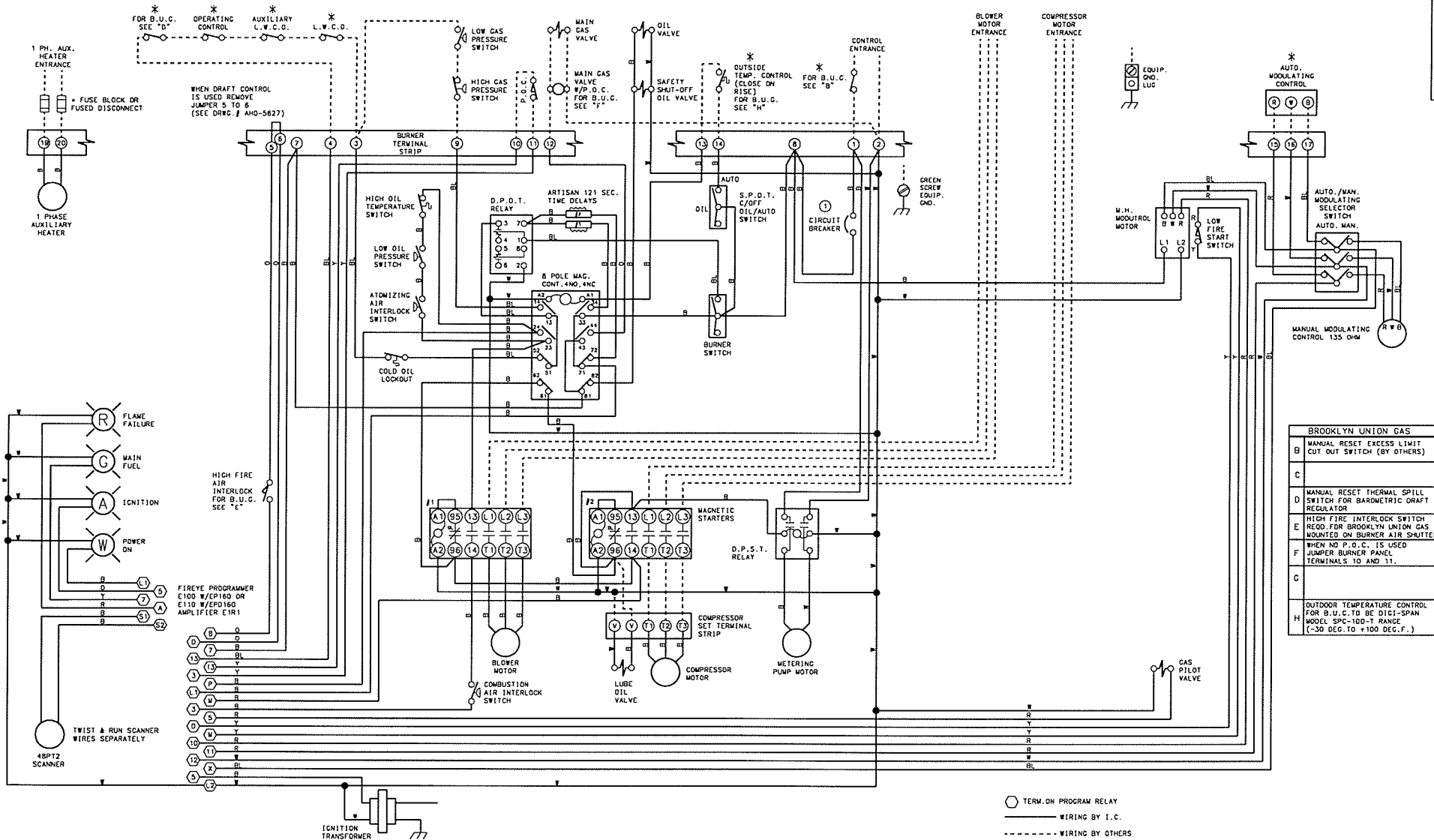


THIS DRAWING IS THE PROPERTY OF INDUSTRIAL COMBUSTION, DIV. OF AQUA-CHEM, INC.
 IT IS SUBJECT TO CHANGE WITHOUT NOTICE, AND IS NOT TO BE COPIED OR USED IN ANY WAY DETRIMENTAL TO THE COMPANY.

NOTE: EACH MOTOR OR HEATER IS TO BE
 FUSED SEPARATELY (BY OTHERS)



WARNING: THESE DRAWINGS ARE TO BE USED ONLY IN CONNECTION WITH EQUIPMENT COMPLYING IN ALL RESPECTS WITH THE ORIGINAL MANUFACTURER'S SPECIFICATIONS. INSTALLER SHOULD INSPECT EQUIPMENT AND ASCERTAIN COMPLIANCE WITH SPECIFICATIONS. FAILURE TO DO SO MAY RESULT IN PERSONAL INJURY OR PROPERTY DAMAGE. INDUSTRIAL COMBUSTION DISCLAIMS ANY AND ALL LIABILITY FOR ANY INJURY OR DAMAGE, WHETHER DIRECT, INDIRECT, INCIDENTAL OR CONSEQUENTIAL, RESULTING FROM USE OF THESE DRAWINGS IN CONNECTION WITH EQUIPMENT WHICH DOES NOT COMPLY IN ALL RESPECTS WITH THE MANUFACTURER'S ORIGINAL SPECIFICATIONS.

BROOKLYN UNION GAS	
B	MANUAL RESET EXCESS LIMIT CUT OUT SWITCH (BY OTHERS)
C	
D	MANUAL RESET THERMAL SPILL SWITCH FOR BAROMETRIC DRAFT REGULATOR
E	HIGH FIRE INTERLOCK SWITCH RECD. FOR BROOKLYN UNION GAS MOUNTED ON BURNER AIR SHUTTER
F	WHEN NO P.O.C. IS USED JUMPER BURNER PANEL TERMINALS 10 AND 11.
G	
H	OUTDOOR TEMPERATURE CONTROL FOR B.U.C. TO BE DICI-SPAN MODEL, SPEC-100-T RANGE (-30 DEG. TO +100 DEG. F.)

REVISIONS	DATE	BY	DESCRIPTION
1	08/25/65	WAS	REVISED
2	09/05/65	WAS	REVISED
3	01/07/67	WAS	REVISED
4	01/07/67	WAS	REVISED
5	01/07/67	WAS	REVISED
6	01/07/67	WAS	REVISED
7	01/07/67	WAS	REVISED
8	01/07/67	WAS	REVISED
9	01/07/67	WAS	REVISED
10	01/07/67	WAS	REVISED

731 06369	WIRE COLOR SYMBOL	WIRE ALL CIRCUITS N E C CLASS 1 NOT RESPONSIBLE FOR WIRING NOT INSTALLED AT THE FACTORY	SCALE	DATE	OPTIONAL EQUIPMENT NOT FURNISHED UNLESS SPECIFIED IN CONTRACT	MEG-34, 42, 54, 63 LV-190-600/3/60 CC-120/1/60	INDUSTRIAL COMBUSTION MONROE, WIS. DIVISION OF AQUA-CHEM, INC.	SIZE D DRWG. NO. 731 06369 03
	YELLOW Y			09/05/64	X.J.C.			