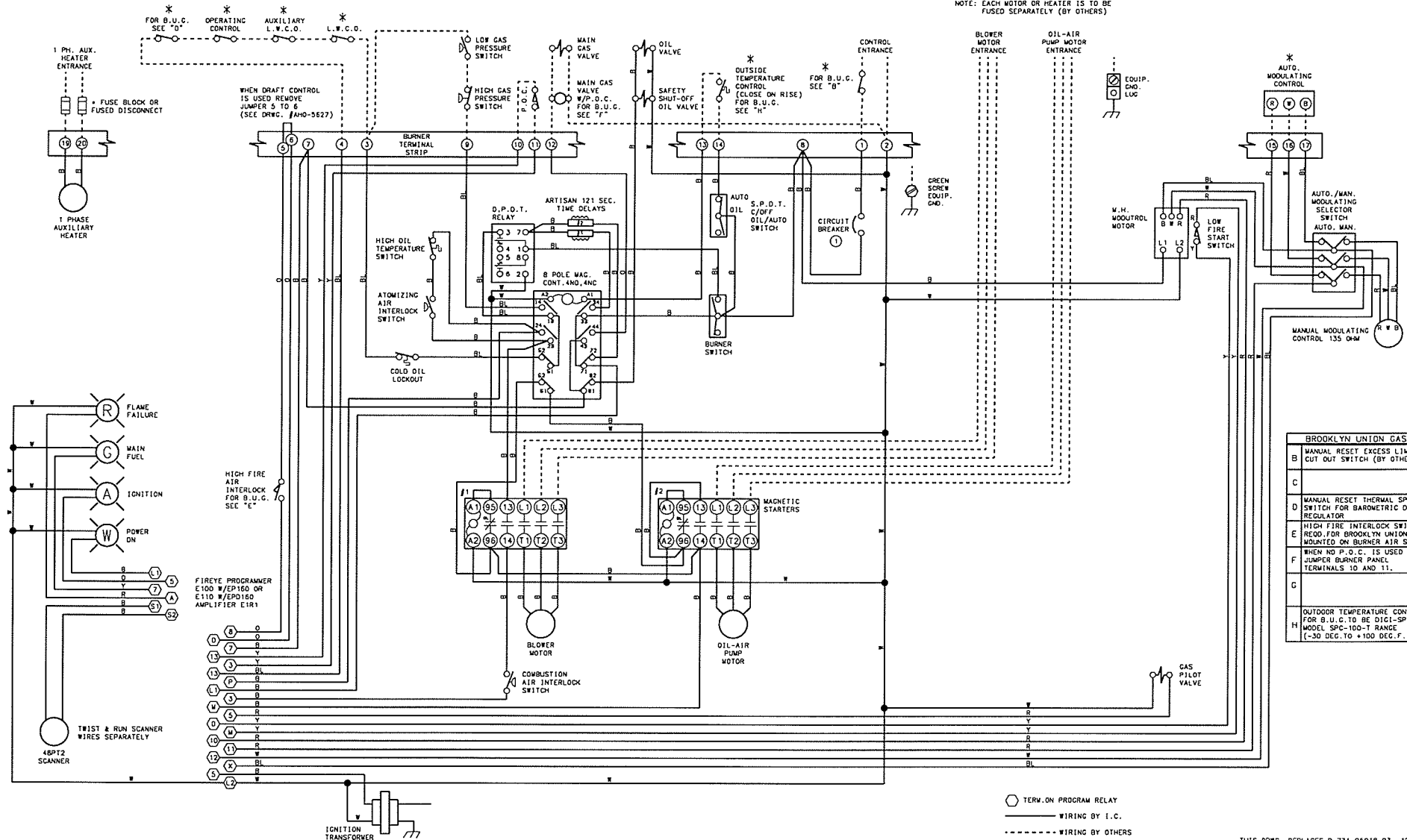


THIS DRAWING IS THE PROPERTY OF INDUSTRIAL COMBUSTION, DIV. OF AQUA-CHEM, INC.
 IT IS SUBJECT TO CHANGE WITHOUT NOTICE, AND IS NOT TO BE COPIED OR USED IN ANY WAY DETRIMENTAL TO THE COMPANY.

NOTE: EACH MOTOR OR HEATER IS TO BE FUSED SEPARATELY (BY OTHERS)



WARNING: THESE DRAWINGS ARE TO BE USED ONLY IN CONNECTION WITH EQUIPMENT COMPLYING IN ALL RESPECTS WITH THE ORIGINAL MANUFACTURER'S SPECIFICATIONS. INSTALLER SHOULD INSPECT EQUIPMENT AND ASCERTAIN COMPLIANCE WITH THE ORIGINAL MANUFACTURER'S SPECIFICATIONS. SUCH USE MAY CAUSE EQUIPMENT FAILURE OR MALFUNCTION WHICH MAY RESULT IN ELECTRICAL SHOCK OR BURNING OR OTHER SEVERE PERSONAL INJURY AND PROPERTY DAMAGE. INDUSTRIAL COMBUSTION DISCLAIMS, IN WHOLE OR IN PART, ANY LIABILITY, WHETHER DIRECT, INDIRECT, INCIDENTAL OR CONSEQUENTIAL, RESULTING FROM USE OF THESE DRAWINGS IN CONNECTION WITH EQUIPMENT WHICH DOES NOT COMPLY IN ALL RESPECTS WITH THE MANUFACTURER'S ORIGINAL SPECIFICATIONS.

BROOKLYN UNION GAS	
B	MANUAL RESET EXCESS LIMIT CUT OUT SWITCH (BY OTHERS)
C	
D	MANUAL RESET THERMAL SPILL SWITCH FOR BAROMETRIC DRAFT REGULATOR
E	HIGH FIRE INTERLOCK SWITCH RECD. FOR BROOKLYN UNION GAS MOUNTED ON BURNER AIR SHUTTER
F	WHEN NO P.O.C. IS USED JUMPER BURNER PANEL TERMINALS 10 AND 11.
G	
H	OUTDOOR TEMPERATURE CONTROL FOR B.U.C. TO BE DIGI-SPAN MODEL SPG-100-T RANGE (-30 DEG. TO +100 DEG. F.)

○ TERV. ON PROGRAM RELAY
 — WIRING BY I.C.
 - - - - - WIRING BY OTHERS

THIS DRWG. REPLACES D-731-05018-03 12/27/94

REVISIONS	DATE	BY	DESCRIPTION
1	11/07/95	RE	REVISED FOR 1000 W/EP160 OR E110 W/EPD160 AMPLIFIER E1R1
2	12/27/94	RE	REVISED FOR 1000 W/EP160 OR E110 W/EPD160 AMPLIFIER E1R1

WIRE COLOR	SYMBOL	WIRE ALL CIRCUITS IN E.C. CLASS 1 NOT RESPONSIBLE FOR WIRING NOT INSTALLED AT THE FACTORY
YELLOW	Y	
ORANGE	O	
RED	R	
BLUE	B	
WHITE	W	① SUPPLEMENTARY LOW VOLTAGE PROTECTION ONLY FUSE NOT LARGER THAN 1/8 AMP
BLACK	B	

SCALE	DATE	OPTIONAL EQUIPMENT NOT FURNISHED UNLESS SPECIFIED IN CONTRACT
1/2"	12/27/94	

* MMG-28, 30, 34, 42, 54, 63
 LV-190-600/3/60
 CC-120/1/60

INDUSTRIAL COMBUSTION
 MORRIS, WIS. DIVISION OF AQUA-CHEM, INC.

SIZE D DRWG. NO. 731 06557 02