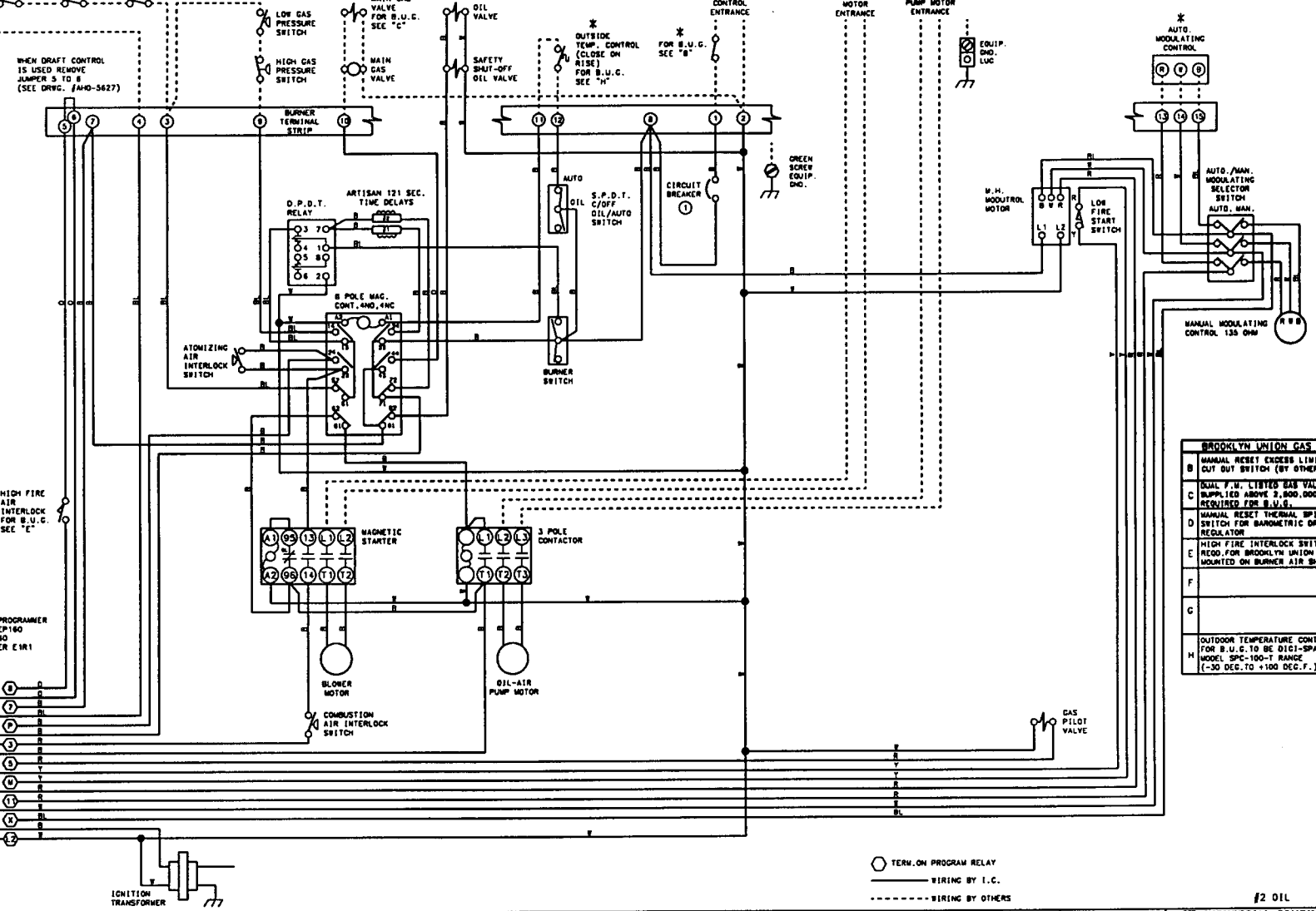


THIS DRAWING IS THE PROPERTY OF INDUSTRIAL COMBUSTION, DIV. OF AQUA-CHEM, INC.
 IT IS SUBJECT TO CHANGE WITHOUT NOTICE, AND IS NOT TO BE COPIED OR USED IN ANY WAY DETRIMENTAL TO THE COMPANY.

731-07834-00

* FOR B.U.C. SEE "D"
 * OPERATING CONTROL
 * AUXILIARY L.V.C.O.
 * L.V.C.O.

NOTE: EACH MOTOR OR HEATER IS TO BE FUSED SEPARATELY (BY OTHERS)



WHEN DRAFT CONTROL IS USED REMOVE JUMPER 5 TO 6 (SEE DRWG. FAHD-5627)

HIGH FIRE AIR INTERLOCK FOR B.U.C. SEE "E"

FIRE EYE PROGRAMMER MODULE EP160 OR EPD180 AMPLIFIER E1R1

TRIST & RUN SCANNER 48PTZ SCANNER

IGNITION TRANSFORMER

| BROOKLYN UNION GAS | |
|--------------------|---------------------------------------------------------------------------------------------------------|
| B | MANUAL RESET EXCESS LIMIT CUT OUT SWITCH (BY OTHERS) |
| C | QUAL. F.H. LISTED GAS VALVES SUPPLIED ABOVE 2,000,000 BTU REQUIRED FOR B.U.G. |
| D | MANUAL RESET THERMAL SPILL SWITCH FOR BAROMETRIC DRAFT REGULATOR |
| E | HIGH FIRE INTERLOCK SWITCH REQD. FOR BROOKLYN UNION GAS MOUNTED ON BURNER AIR SHUTTER |
| F | |
| G | |
| H | OUTDOOR TEMPERATURE CONTROL FOR B.U.C. TO BE DIGI-SPAN MODEL SPC-100-T RANGE (-30 DEG. TO +100 DEG. F.) |

○ TERM. ON PROGRAM RELAY
 — WIRING BY I.C.
 - - - WIRING BY OTHERS

| WIRE COLOR | SYMBOL | WIRE ALL CIRCUITS W.E.C. UNLESS 1. NOT RESPONSIBLE FOR WIRING NOT INSTALLED AT THE FACTORY. |
|------------|--------|---------------------------------------------------------------------------------------------|
| STEEL | T | |
| ORANGE | O | |
| RED | R | |
| BLUE | BL | |
| WHITE | W | |
| BLACK | B | |

* OPTIONAL EQUIPMENT NOT FURNISHED UNLESS SPECIFIED IN CONTRACT.

| INDUSTRIAL COMBUSTION | |
|-----------------------|-------------------|
| DATE | APR-28-30, 34, 42 |
| REV. | LV-120-240/1/60 |
| DATE | 07/11/67 |
| REV. | CC-100/1/60 |
| DATE | REV. 1.1.4 |
| REV. | REV. 1.1.4 |

#2 OIL

731-07834-00

WARNING: THESE DRAWINGS ARE TO BE USED ONLY IN CONNECTION WITH EQUIPMENT CONFORMING TO ALL SPECIFICATIONS WITHIN THE ORIGINAL MANUFACTURER'S SPECIFICATIONS. INSTALLER SHOULD IMPROVE EQUIPMENT AND ASSEMBLY WORK (LACKS WITH ORIGINAL MANUFACTURER'S SPECIFICATIONS) BEFORE USING THESE DRAWINGS. DO NOT USE THESE DRAWINGS IF THE EQUIPMENT HAS BEEN MODIFIED, WHICH USE MAY CAUSE EQUIPMENT FAILURE OR MALFUNCTION WHICH MAY RESULT IN ELECTRICAL SHOCK OR BURNING OR OTHER SEVERE PERSONAL INJURY AND PROPERTY DAMAGE. INDUSTRIAL COMBUSTION DISCLAIMS ANY AND ALL LIABILITY FOR ANY INJURY OR DAMAGE, WHETHER DIRECT, INDIRECT, INCIDENTAL OR CONSEQUENTIAL, RESULTING FROM USE OF THESE DRAWINGS IN CONNECTION WITH EQUIPMENT WHICH DOES NOT CONFORM TO ALL REQUIREMENTS WITHIN THE MANUFACTURER'S ORIGINAL SPECIFICATIONS.

REVISIONS