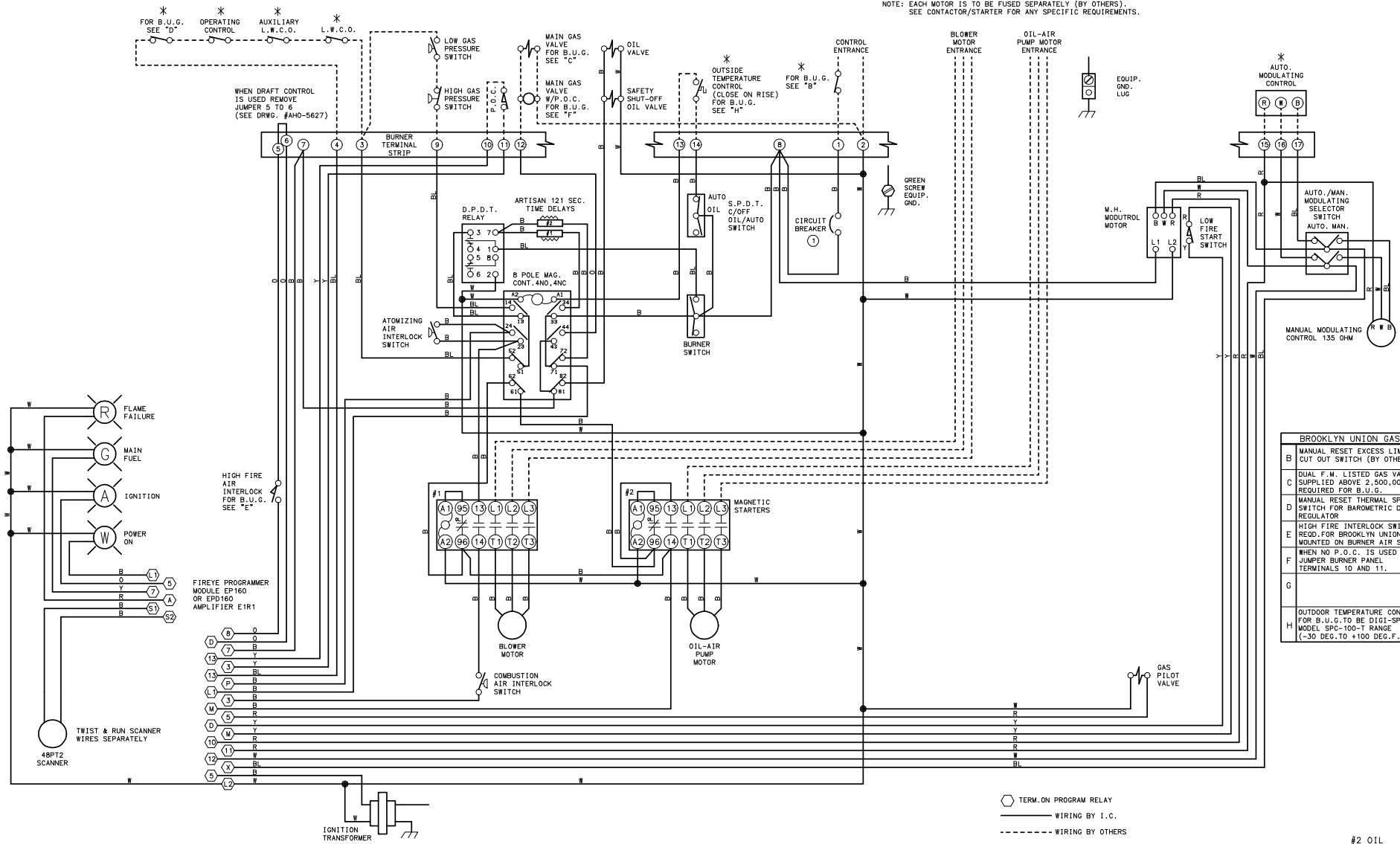


THIS DRAWING IS THE PROPERTY OF INDUSTRIAL COMBUSTION.
IT IS SUBJECT TO CHANGE WITHOUT NOTICE, AND IS NOT TO BE COPIED OR USED IN ANY MANNER DETRIMENTAL TO THE COMPANY.

NOTE: EACH MOTOR IS TO BE FUSED SEPARATELY (BY OTHERS).
SEE CONTACTOR/STARTER FOR ANY SPECIFIC REQUIREMENTS.



WARNING: THESE DRAWINGS ARE TO BE USED ONLY IN CONNECTION WITH EQUIPMENT COMPLYING IN ALL RESPECTS WITH THE ORIGINAL MANUFACTURER'S SPECIFICATIONS. INSTALLER SHOULD INSPECT EQUIPMENT AND ASCERTAIN COMPLIANCE WITH ORIGINAL MANUFACTURER'S SPECIFICATIONS BEFORE USING THESE DRAWINGS. DO NOT USE THESE DRAWINGS IF THE EQUIPMENT HAS BEEN MODIFIED, SUCH USE MAY CAUSE EQUIPMENT FAILURE OR MALFUNCTION WHICH MAY RESULT IN ELECTRICAL SHOCK OR BURNS OR OTHER SEVERE PERSONAL INJURY AND PROPERTY DAMAGE. INDUSTRIAL COMBUSTION DISCLAIMS ANY AND ALL LIABILITY FOR ANY INJURY OR DAMAGE, WHETHER DIRECT, INDIRECT, INCIDENTAL OR CONSEQUENTIAL, RESULTING FROM USE OF THESE DRAWINGS IN CONNECTION WITH EQUIPMENT WHICH DOES NOT COMPLY IN ALL RESPECTS WITH THE MANUFACTURER'S ORIGINAL SPECIFICATIONS.

REVISIONS
11/07/97/03 TD
NEW FORMAT
09/27/08 DP
REVISIONS TO
WIRING AND
SWITCHING
SCHEMATIC
SPILL.

WIRE COLOR	SYMBOL	WIRE ALL CIRCUITS N.E.C. CLASS 1: NOT RESPONSIBLE FOR WIRING NOT INSTALLED AT THE FACTORY.	SCALE
YELLOW	Y		DATE
ORANGE	O		07/11/97
RED	R	(D) SUPPLEMENTARY LOW VOLTAGE PROTECTION ONLY. FUSE NOT LARGER THAN 15 AMPS.	DRAWN
BLUE	B		B.C.S.
WHITE	W		
BLACK	B		

731 07835	MMG-28,30,34,42,54,63 LV-190-600/3/60 CC-120/1/60
-----------	---

*
OPTIONAL EQUIPMENT NOT FURNISHED UNLESS SPECIFIED IN CONTRACT.

INDUSTRIAL COMBUSTION
MONROE, WIS.

SIZE D	DRWG. NO. 731 07835	02
--------	---------------------	----

BROOKLYN UNION GAS	
B	MANUAL RESET EXCESS LIMIT OUT OUT SWITCH (BY OTHERS)
C	DUAL F.M. LISTED GAS VALVES SUPPLIED ABOVE 2,500,000 REQUIRED FOR B.U.G.
D	MANUAL RESET THERMAL SPILL SWITCH FOR BAROMETRIC DRAFT REGULATOR
E	HIGH FIRE INTERLOCK SWITCH REED FOR BROOKLYN UNION GAS MOUNTED ON BURNER AIR SHUTTER
F	WHEN NO P.O.C. IS USED JUMPER BURNER PANEL TERMINALS 10 AND 11.
G	
H	OUTDOOR TEMPERATURE CONTROL FOR B.U.G. TO BE DIGI-SPAN MODEL SPC-100-T RANGE (-30 DEG. TO +100 DEG. F.)

#2 OIL