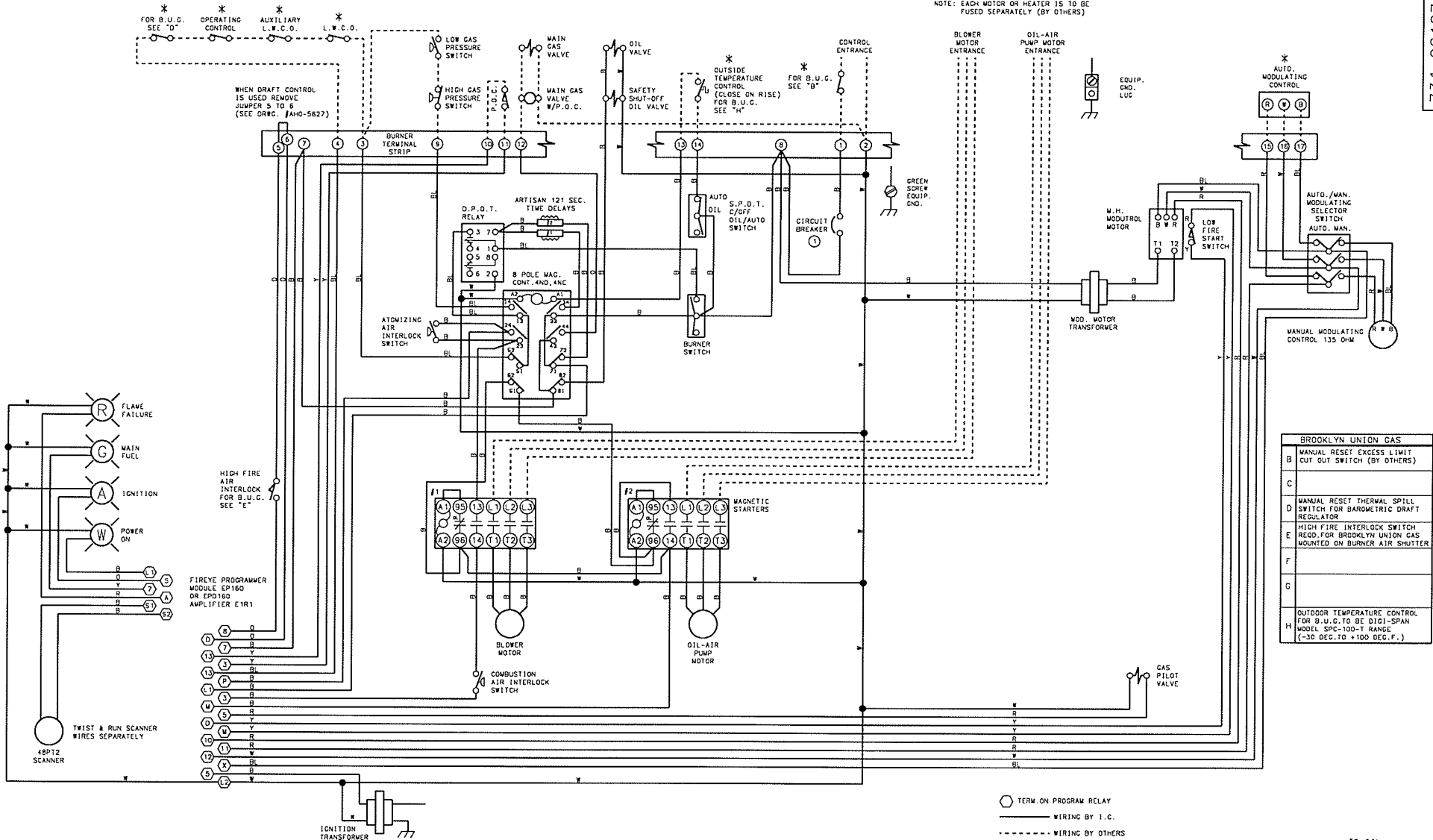


THIS DRAWING IS THE PROPERTY OF INDUSTRIAL COMBUSTION, DIV. OF AQUA-CHEM, INC.  
 IT IS SUBJECT TO CHANGE WITHOUT NOTICE, AND IS NOT TO BE COPIED OR USED IN ANY WAY DETRIMENTAL TO THE COMPANY.

NOTE: EACH MOTOR OR HEATER IS TO BE FUSED SEPARATELY (BY OTHERS)



WARNING: THESE DRAWINGS ARE TO BE USED ONLY IN CONNECTION WITH EQUIPMENT COMPLYING IN ALL RESPECTS WITH THE ORIGINAL MANUFACTURER'S SPECIFICATIONS. INSTALLER SHOULD INSPECT EQUIPMENT AND ADVISE WITH COMPLIANCE WITH THESE DRAWINGS. ANY DEVIATION FROM THESE DRAWINGS OR EQUIPMENT NOT MEETING THESE SPECIFICATIONS MAY CAUSE EQUIPMENT FAILURE OR MALFUNCTION WHICH MAY RESULT IN ELECTRICAL SHOCK OR BURNS OR OTHER SEVERE PERSONAL INJURY AND PROPERTY DAMAGE. INDUSTRIAL COMBUSTION DISCLAIMS AND ASSUMES NO LIABILITY FOR ANY SUCH DAMAGE. WHETHER DIRECT, INDIRECT, INCIDENTAL OR CONSEQUENTIAL, RESULTING FROM USE OF THESE DRAWINGS IN CONNECTION WITH EQUIPMENT WHICH DOES NOT COMPLY IN ALL RESPECTS WITH THE MANUFACTURER'S ORIGINAL SPECIFICATIONS.

\* FOR B.U.G. SEE "D"  
 \* OPERATING CONTROL  
 \* AUXILIARY L.W.C.O.  
 \* L.W.C.O.

WHEN DRAFT CONTROL IS USED REMOVE JUMPER 5 TO 6 (SEE DRWG. #AH0-5627)

\* OUTSIDE TEMPERATURE CONTROL (CLOSE ON RISE) FOR B.U.G. SEE "H"  
 \* FOR B.U.C. SEE "B"

HIGH FIRE AIR INTERLOCK FOR B.U.C. SEE "E"

FIREYE PROGRAMMER MODULE EP160 OR EPD160 AMPLIFIER E1R1

48PT2 SCANNER  
 TWIST & RUN SCANNER WIRES SEPARATELY

BROOKLYN UNION GAS	
B	MANUAL RESET EXCESS LIMIT CUT OUT SWITCH (BY OTHERS)
C	
D	MANUAL RESET THERMAL SPILL SWITCH FOR BAROMETRIC DRAFT REGULATOR
E	HIGH FIRE INTERLOCK SWITCH RECD. FOR BROOKLYN UNION GAS MOUNTED ON BURNER AIR SHUTTER
F	
G	
H	OUTDOOR TEMPERATURE CONTROL FOR B.U.G. TO BE DIGI-SPAN MODEL. SPEC-100-T RANGE (-30 DEG. TO +100 DEG. F.)

○ TERM. ON PROGRAM RELAY  
 — WIRING BY I.C.  
 - - - - - WIRING BY OTHERS

#2 OIL

REVISIONS BY: DATE: DRAWN BY: CHECKED BY: APPROVED BY:	WIRE COLOR SYMBOL YELLOW Y ORANGE O RED R BLUE BL WHITE W BLACK B	WIRE ALL CIRCUITS W.C.C. CLASS 3 NOT RESPONSIBLE FOR WIRING NOT INSTALLED AT THE FACTORY. (D) SUPPLEMENTARY LOW OVERCURRENT PROTECTION ONLY FUSE NOT LARGER THAN 16 AMP.	SCALE DATE 11/21/97 DRAWN J. J. Y.	* OPTIONAL EQUIPMENT NOT FURNISHED UNLESS SPECIFIED IN CONTRACT	MMG-84, 105 LV-190-600/3/60 CC-120/1/60	IC INDUSTRIAL COMBUSTION MONROE, WIS. DIVISION OF AQUA-CHEM, INC.	SIZE D DRWG. NO. 731 08107 01
--	---	---	--	---	---	--	----------------------------------