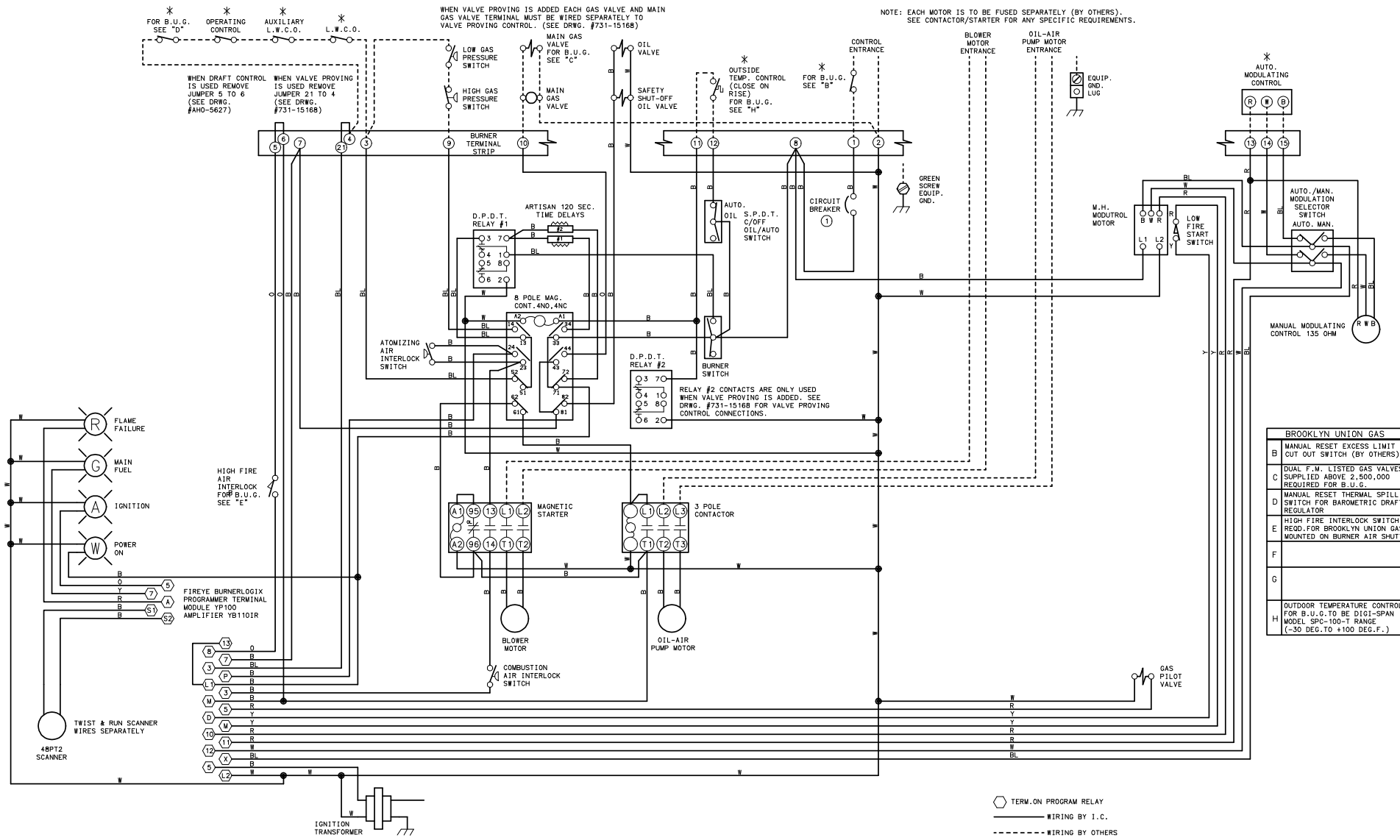


THIS DRAWING IS THE PROPERTY OF INDUSTRIAL COMBUSTION, LLC
 IT IS SUBJECT TO CHANGE WITHOUT NOTICE, AND IS NOT TO BE COPIED OR USED IN ANY WAY DETRIMENTAL TO THE COMPANY.

WARNING: THESE DRAWINGS ARE TO BE USED ONLY IN CONNECTION WITH EQUIPMENT COMPLYING IN ALL RESPECTS WITH THE ORIGINAL MANUFACTURER'S SPECIFICATIONS. INSTALLER SHOULD INSPECT EQUIPMENT AND ASCERTAIN COMPLIANCE WITH ORIGINAL MANUFACTURER'S SPECIFICATIONS BEFORE USING THESE DRAWINGS. DO NOT USE THESE DRAWINGS IF THE EQUIPMENT HAS BEEN MODIFIED, SUCH USE MAY CAUSE EQUIPMENT FAILURE OR MALFUNCTION WHICH MAY RESULT IN ELECTRICAL SHOCK OR BURNS OR OTHER SEVERE PERSONAL INJURY AND PROPERTY DAMAGE. INDUSTRIAL COMBUSTION DISCLAIMS ANY AND ALL LIABILITY FOR ANY INJURY OR DAMAGE, WHETHER DIRECT, INDIRECT, INCIDENTAL OR CONSEQUENTIAL, RESULTING FROM USE OF THESE DRAWINGS IN CONNECTION WITH EQUIPMENT WHICH DOES NOT COMPLY IN ALL RESPECTS WITH THE MANUFACTURER'S ORIGINAL SPECIFICATIONS.

WHEN VALVE PROVING IS ADDED EACH GAS VALVE AND MAIN GAS VALVE TERMINAL MUST BE WIRED SEPARATELY TO VALVE PROVING CONTROL. (SEE DRWG. #731-15168)

NOTE: EACH MOTOR IS TO BE FUSED SEPARATELY (BY OTHERS).
 SEE CONTACTOR/STARTER FOR ANY SPECIFIC REQUIREMENTS.



BROOKLYN UNION GAS	
B	MANUAL RESET EXCESS LIMIT OUT OUT SWITCH (BY OTHERS)
C	DUAL F.M. LISTED GAS VALVES SUPPLIED ABOVE 2,500,000 REQUIRED FOR B.U.G.
D	MANUAL RESET THERMAL SPILL SWITCH FOR BAROMETRIC DRAFT REGULATOR
E	HIGH FIRE INTERLOCK SWITCH REQD. FOR BROOKLYN UNION GAS MOUNTED ON BURNER AIR SHUTTER
F	
G	
H	OUTDOOR TEMPERATURE CONTROL FOR B.U.G. TO BE DIGI-SPAN MODEL SPC-100-T RANGE (-30 DEG. TO +100 DEG. F.)

REVISIONS 11/20/07/07 RELAY #7, OIL ON REVISED.	731-15179	WIRE COLOR SYMBOL YELLOW Y ORANGE O RED R BLUE BL WHITE H BLACK B	WIRE ALL CIRCUITS N.E.C. CLASS 1; NOT RESPONSIBLE FOR WIRING NOT INSTALLED AT THE FACTORY. (D) SUPPLEMENTARY LOW OVERCURRENT PROTECTION ONLY. FUSE NOT LARGER THAN 15 AMPS.	SCALE DATE 09/20/07 DRAWN J.B.P.	* OPTIONAL EQUIPMENT NOT FURNISHED UNLESS SPECIFIED IN CONTRACT.	MMG-28,30,34,42 LV-120-240/1/60 CC-120/1/60 #2 OIL	INDUSTRIAL COMBUSTION, LLC SIZE D DRWG. NO. 731-15179	01
	69 TERM. ON PROGRAM RELAY --- WIRING BY I.C. - - - - - WIRING BY OTHERS							