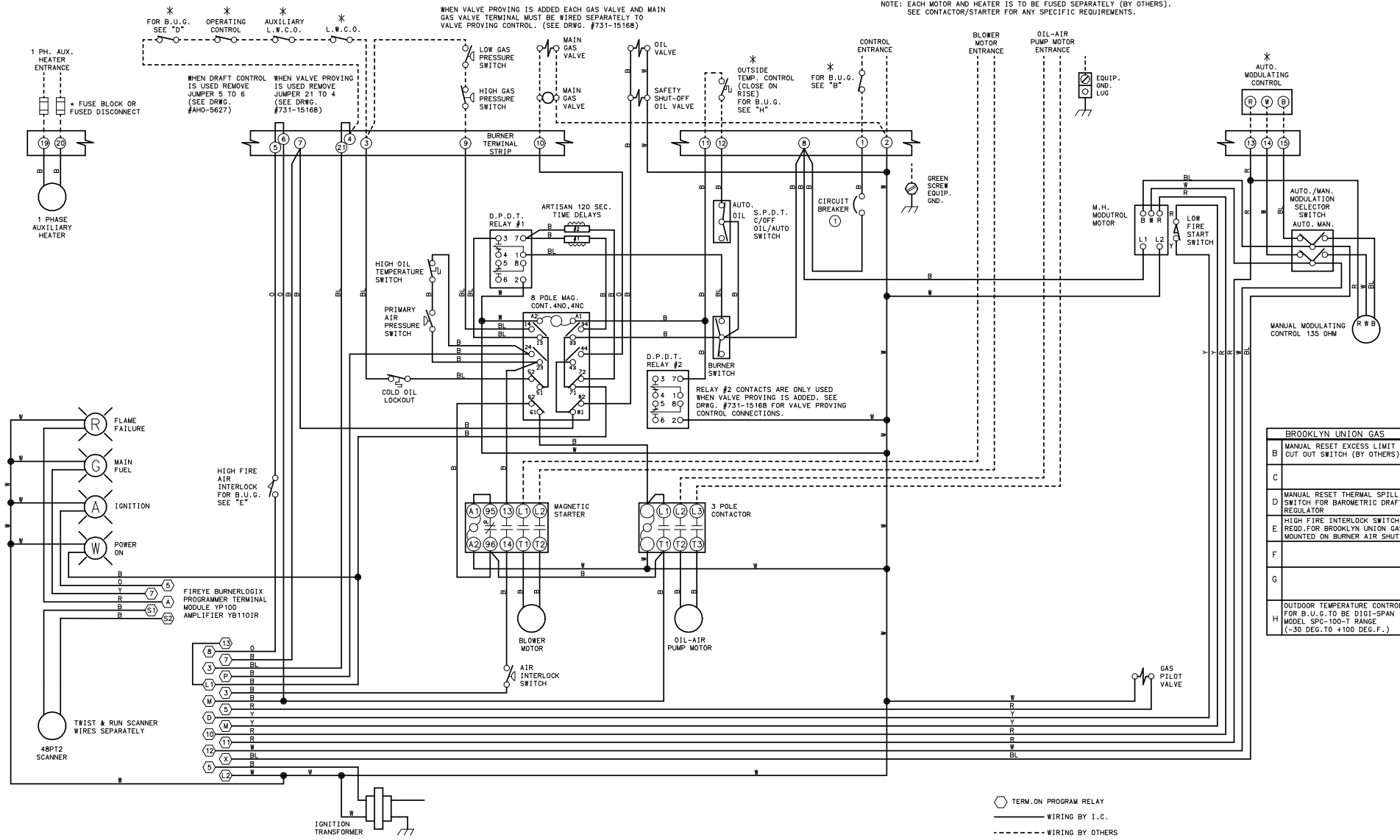


THIS DRAWING IS THE PROPERTY OF INDUSTRIAL COMBUSTION, LLC
 IT IS SUBJECT TO CHANGE WITHOUT NOTICE, AND IS NOT TO BE COPIED OR USED IN ANY WAY DETRIMENTAL TO THE COMPANY.

WARNING: THESE DRAWINGS ARE TO BE USED ONLY IN CONNECTION WITH EQUIPMENT COMPLYING IN ALL RESPECTS WITH THE ORIGINAL MANUFACTURER'S SPECIFICATIONS. INSTALLER SHOULD INSPECT EQUIPMENT AND ASCERTAIN COMPLIANCE WITH ORIGINAL MANUFACTURER'S SPECIFICATIONS BEFORE USING THESE DRAWINGS. DO NOT USE THESE DRAWINGS IF THE EQUIPMENT HAS BEEN MODIFIED, SUCH USE MAY CAUSE EQUIPMENT FAILURE OR MALFUNCTION WHICH MAY RESULT IN ELECTRICAL SHOCK OR BURNS OR OTHER SEVERE PERSONAL INJURY AND PROPERTY DAMAGE. INDUSTRIAL COMBUSTION DISCLAIMS ANY AND ALL LIABILITY FOR ANY INJURY OR DAMAGE, WHETHER DIRECT, INDIRECT, INCIDENTAL OR CONSEQUENTIAL, RESULTING FROM USE OF THESE DRAWINGS IN CONNECTION WITH EQUIPMENT WHICH DOES NOT COMPLY IN ALL RESPECTS WITH THE MANUFACTURER'S ORIGINAL SPECIFICATIONS.

WHEN VALVE PROVING IS ADDED EACH GAS VALVE AND MAIN GAS VALVE TERMINAL MUST BE WIRED SEPARATELY TO VALVE PROVING CONTROL. (SEE DRWG. #731-15168)

NOTE: EACH MOTOR AND HEATER IS TO BE FUSED SEPARATELY (BY OTHERS).
 SEE CONTACTOR/STARTER FOR ANY SPECIFIC REQUIREMENTS.



FOR B.U.G. * OPERATING * AUXILIARY *
 SEE "D" CONTROL L.W.C.O.

WHEN DRAFT CONTROL IS USED REMOVE JUMPER 5 TO 6 (SEE DRWG. #4H0-5627)

WHEN VALVE PROVING IS USED REMOVE JUMPER 21 TO 4 (SEE DRWG. #731-15168)

LOW GAS PRESSURE SWITCH

HIGH GAS PRESSURE SWITCH

MAIN GAS VALVE

OIL VALVE

SAFETY SHUT-OFF OIL VALVE

OUTSIDE TEMP. CONTROL (CLOSE ON RISE) FOR B.U.G. SEE "H"

FOR B.U.G. SEE "B"

D.P.D.T. RELAY #2

RELAY #2 CONTACTS ARE ONLY USED WHEN VALVE PROVING IS ADDED. SEE DRWG. #731-15168 FOR VALVE PROVING CONTROL CONNECTIONS.

BROOKLYN UNION GAS	
B	MANUAL RESET EXCESS LIMIT CUT OUT SWITCH (BY OTHERS)
C	
D	MANUAL RESET THERMAL SPILL SWITCH FOR BAROMETRIC DRAFT REGULATOR
E	HIGH FIRE INTERLOCK SWITCH REED. FOR BROOKLYN UNION GAS MOUNTED ON BURNER AIR SHUTTER
F	
G	
H	OUTDOOR TEMPERATURE CONTROL FOR B.U.G. TO BE DIGI-SPAN MODEL SPC-100-T RANGE (-30 DEG. TO +100 DEG. F.)

○ TERM. ON PROGRAM RELAY
 — WIRING BY I.C.
 - - - - - WIRING BY OTHERS

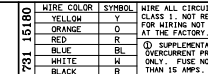
REVISIONS	DATE	BY
1	12/05/07	DP
2	07/09/07	DP
3	07/09/07	DP

WIRE COLOR	SYMBOL	WIRE ALL CIRCUITS N.E.C. CLASS 1; NOT RESPONSIBLE FOR WIRING NOT INSTALLED AT THE FACTORY.
YELLOW	Y	
ORANGE	O	
RED	R	
BLUE	BL	
WHITE	W	
BLACK	B	

SCALE	DATE	DATE	BY
	09/20/07	09/20/07	DP

OPTIONAL EQUIPMENT NOT FURNISHED UNLESS SPECIFIED IN CONTRACT.

MMG-28, 30, 34, 42
 LV-120-240/1/60
 CC-120/1/60



INDUSTRIAL COMBUSTION, LLC
 SIZE D DRWG. NO. 731-15180