



For more detailed instructions, consult the ECOM-B complete manual.

### Initiation and Measurement

- Check fine dust filter.  
-Change if grey color > 3 of soot scale.  
-Change if extended past "MAX" mark.
- Connect sampling probe.
- Press ON/OFF switch .
- Start gas measurement with <Enter>
- Select fuel type and confirm with <Enter>
- If needed, select storage location.
- Wait for auto-zero phase to complete.
- Position sampling probe in exhaust pipe.
- Search for stream core.
- Wait at least 2 minutes for stabilization of measurement values.
- Store values in intermediate memory by pressing <Store> (the disc symbol).
- If needed, print measured values by pressing <Print> (IR printer required)
- If needed, store measurement in selected storage location (<Enter> / <Store to memory> / <Enter>).
- Remove sampling probe from exhaust pipe and let it cool down.
- Press ON/OFF key of instrument to switch off.

### Technical Data

Parameter	Range	Principles
O <sub>2</sub>	0 ... 21 vol-%	electrochemical
CO	0 ...4000 ppm	electrochemical
NO (Option)	0 ...5000 ppm	electrochemical
CO <sub>2</sub>	0 ...CO <sub>2</sub> max.	calculated
T-G	0 ... 500 °C	NiCr/Ni
T-R	0 ... 100 °C	semiconductor
Pressure	0 ... +/- 100 hPa	DMS-bridge
Efficiency	0 ... 120 %	calculated
Losses	0 ... 99,9 %	calculated
Lambda	1 ... ∞	calculated
CO-undiluted (reference-O <sub>2</sub> ; adjustable)		calculated
Dew point of combustion gases		calculated
<b>Power Supply</b>	110 - 230 V~ / 50 - 60 Hz;	
<b>Battery</b>	6 V / 3,3 Ah	
<b>Display</b>	graphic display, backlit	
<b>Size (W x H x D)</b>	250 mm x 180 mm x 80 mm	
<b>Weight</b>	approx. 2,1 kg (complete with sampling system)	

Subject to technical changes  
V1.0/ 02.2014

**ECOM America**  
1628 Oakbrook Drive  
Gainesville, GA 30507  
Tel. 770.532.3280  
Fax 770.532.3620

Internet: [www.ecomusa.com](http://www.ecomusa.com)

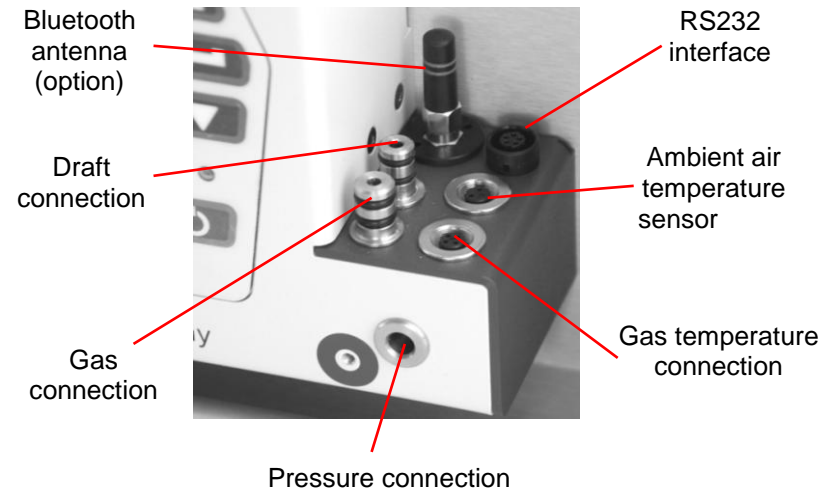
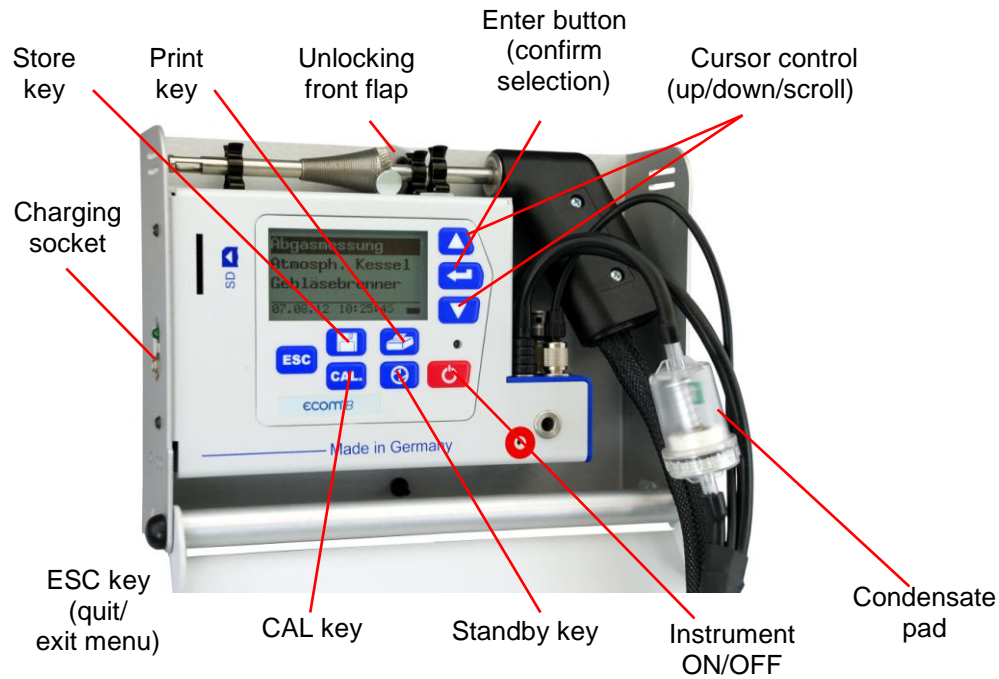
**ecom**<sup>®</sup>



**Quick guide**

**ecom**<sup>®</sup> B

## Instrument Design



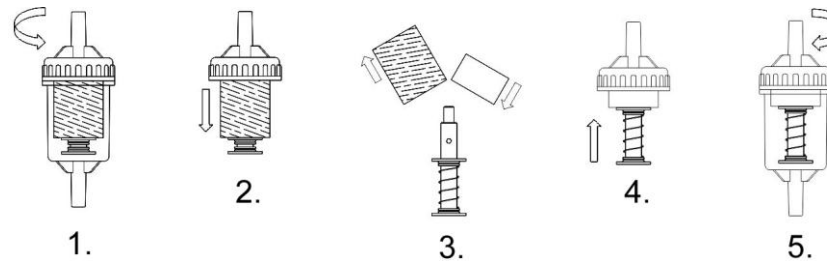
## Condensate pad

Regularly check the condition of the condensate pad. It should be changed:

- If it is darker than no. 3 on the soot scale
- If it is extended past "MAX" mark.

Replace the condensate pad as follows:

1. Remove hose from the cap and unscrew the cap
2. Unscrew the retaining bolt with spring
3. Replace old condensate pad against new
4. Screw on retain bolt with spring again
5. Screw on cap and replace the hose to the cap



**WYMBS INC**

Hev-e-Oil Burner Distributors

2395 WASHINGTON AVENUE - BRONX, NY 10458

(718) 295-3500 FAX (718) 295-4526

WWW.WYMBS.COM

EST. 1938